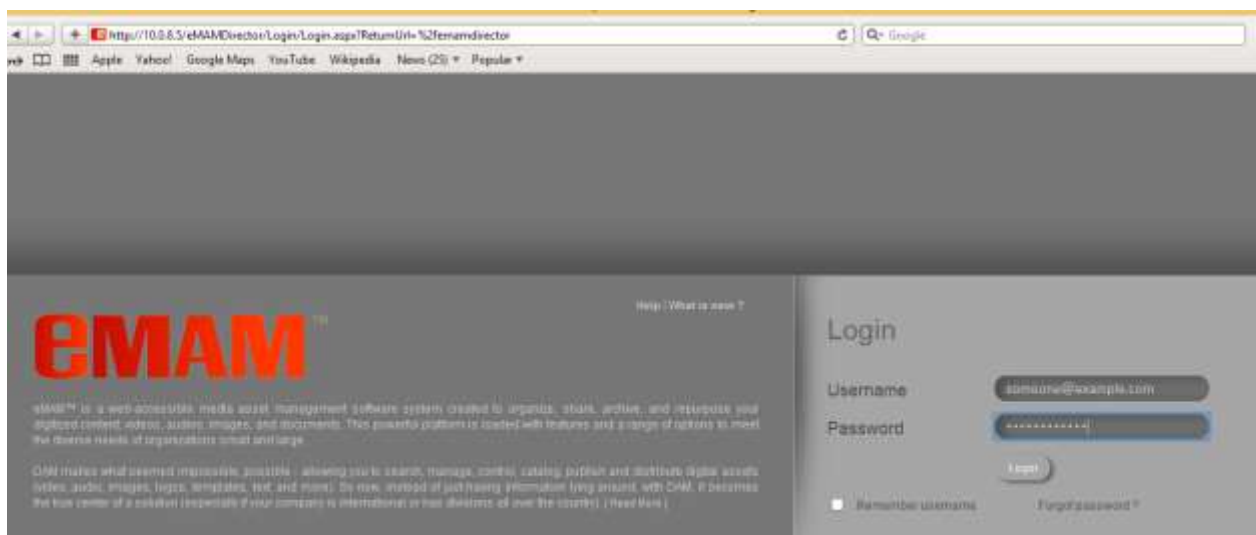


Steps to install eMAM Feeder.

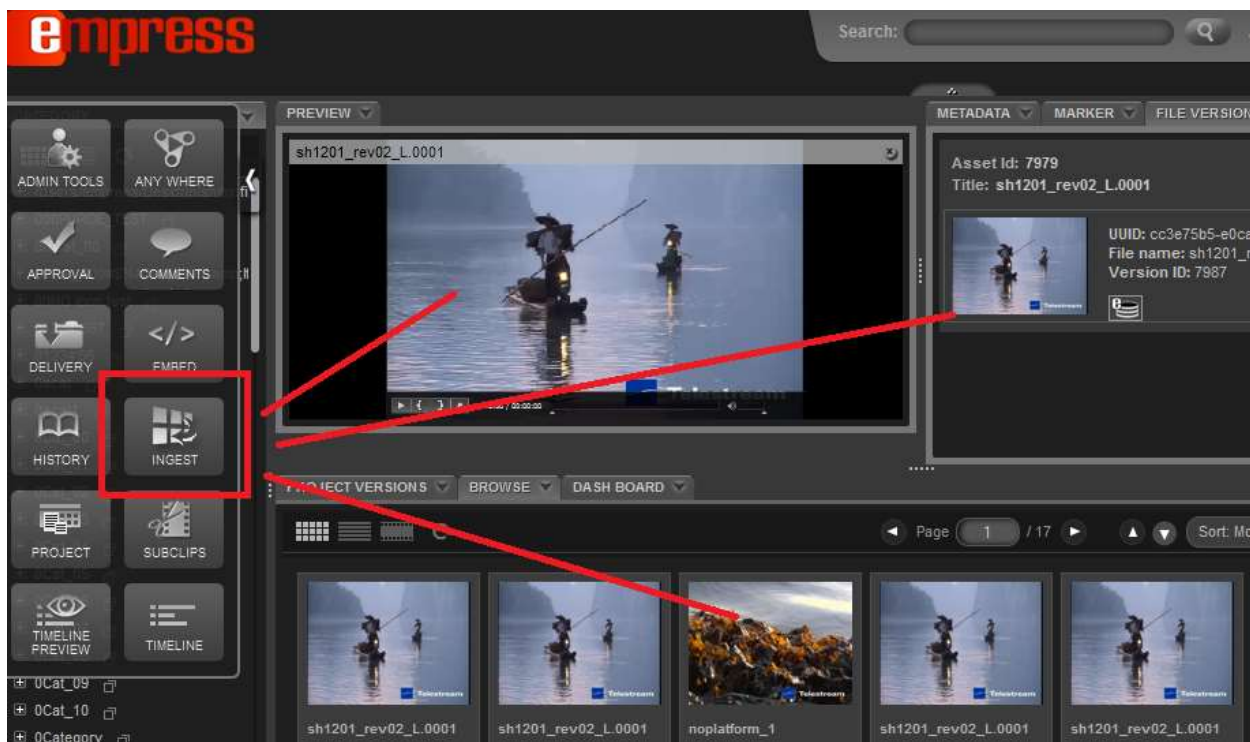
- Go to eMAM Director Interface by giving URL, <http://SERVERNAME/eMAMDirector>
Please replace **SERVERNAME** with actual eMAM Web server name or IP.



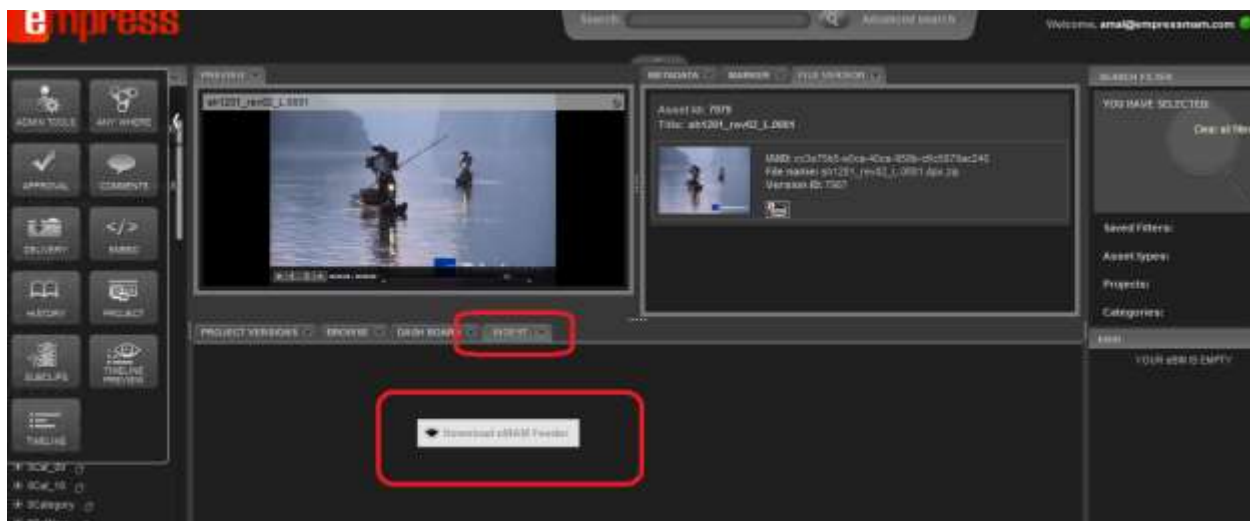
- Please login with your eMAM / Active Directory account.
- Once you have logged in, please click on the widget explorer to see all widgets.



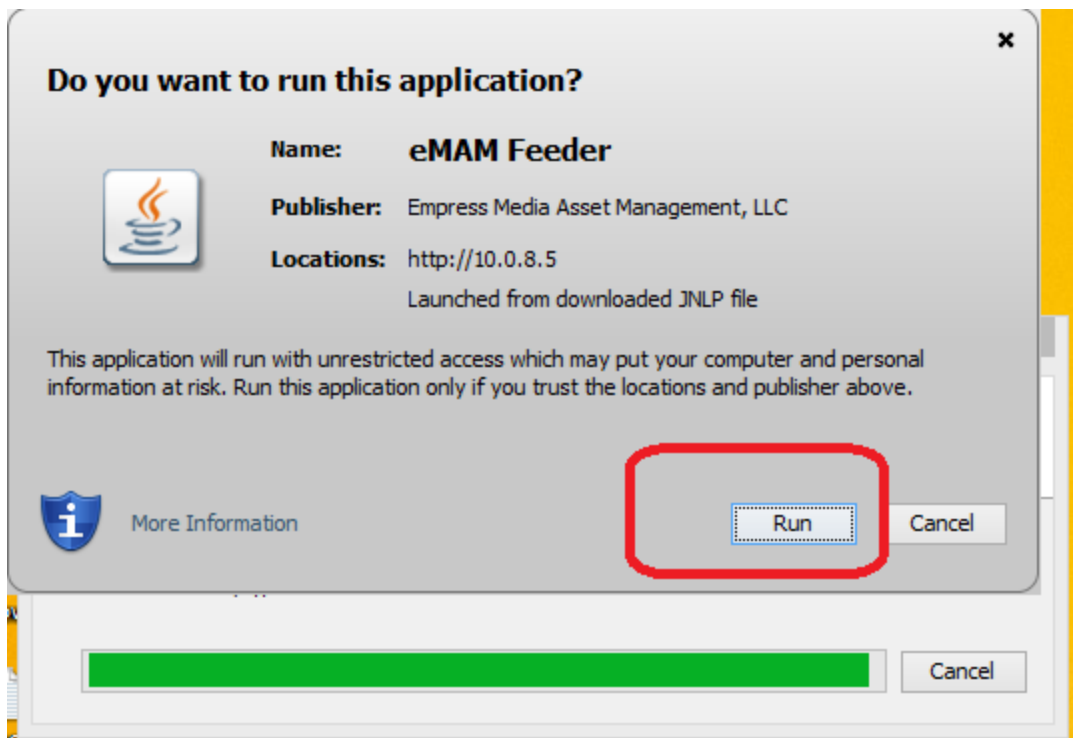
- Lookup the ingest widget shown in the below picture and drag it to any dockable area on the director interface.



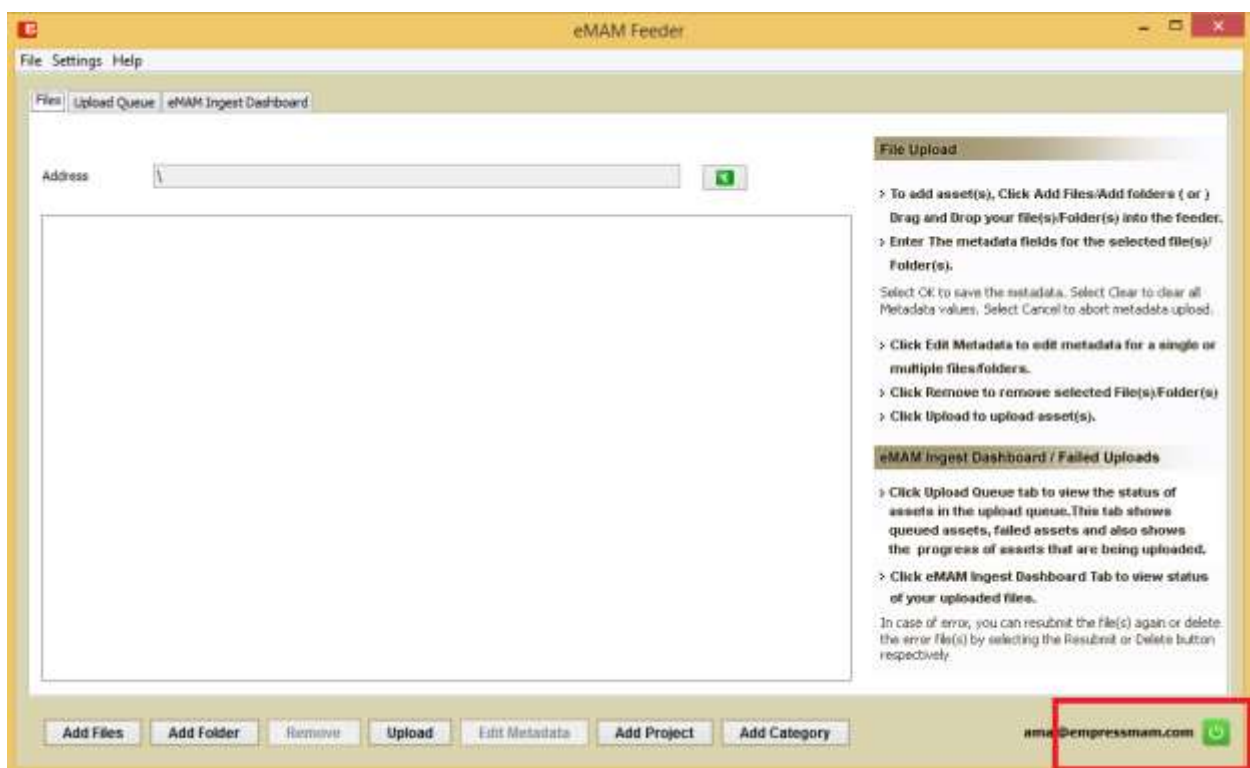
- Inside Ingest widget you can see the “Download eMAM Feeder” button. Please click on that.



- eMAMFeeder.jnlp file will be downloaded to your computer. Please run the downloaded eMAMFeeder.jnlp file by double clicking on it.
- eMAM Feeder download will get automatically started. Once it is completed, you will get a java security prompt asking your permission to run eMAM Feeder Application. Please click on run button.

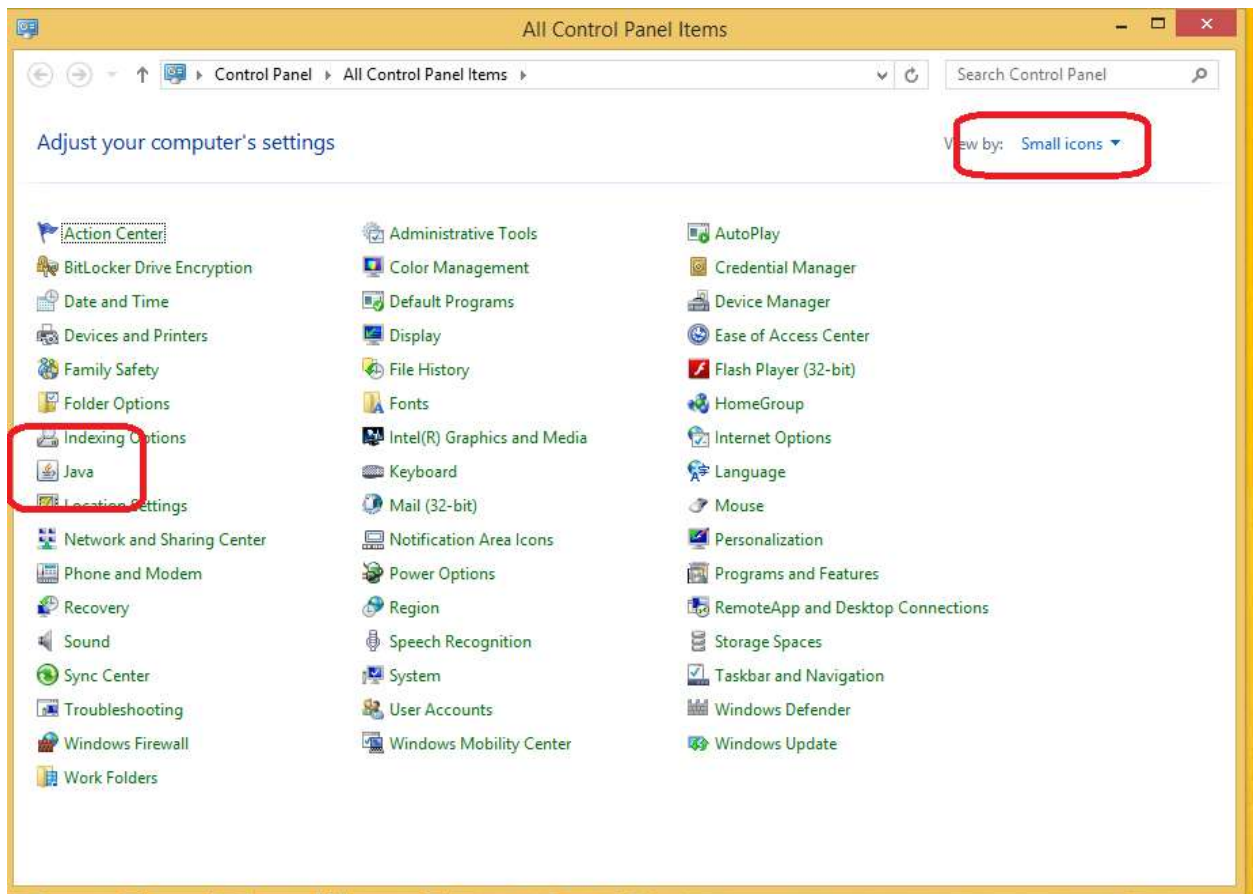


- Once you click on run button, your eMAM Feeder will launch and it will be ready to use. Please make sure the green button at the bottom right corner is glowing. If it is grayed you might have lost connection with eMAM Gateway. Please check your connection with eMAM web Server.

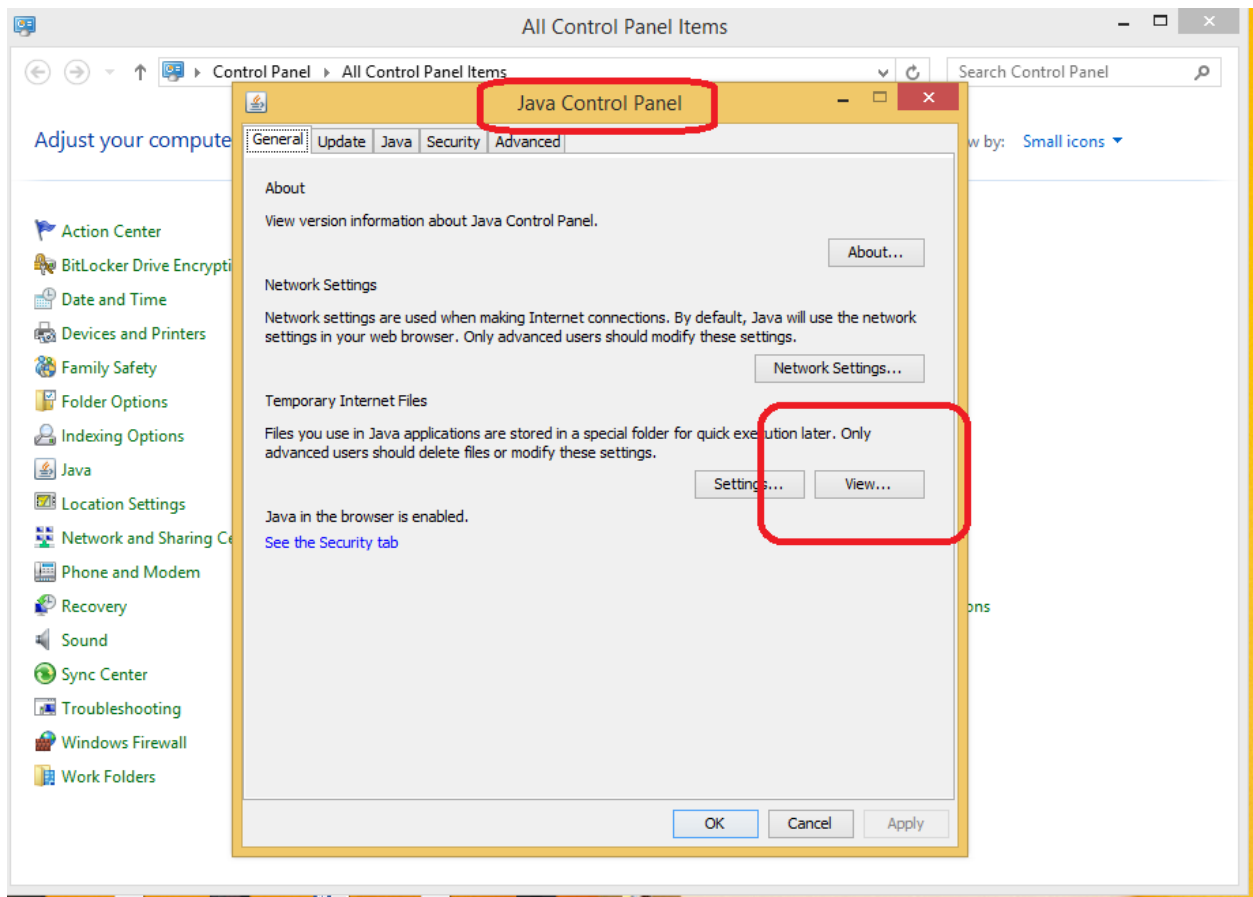


Steps to remove eMAM Feeder (Windows).

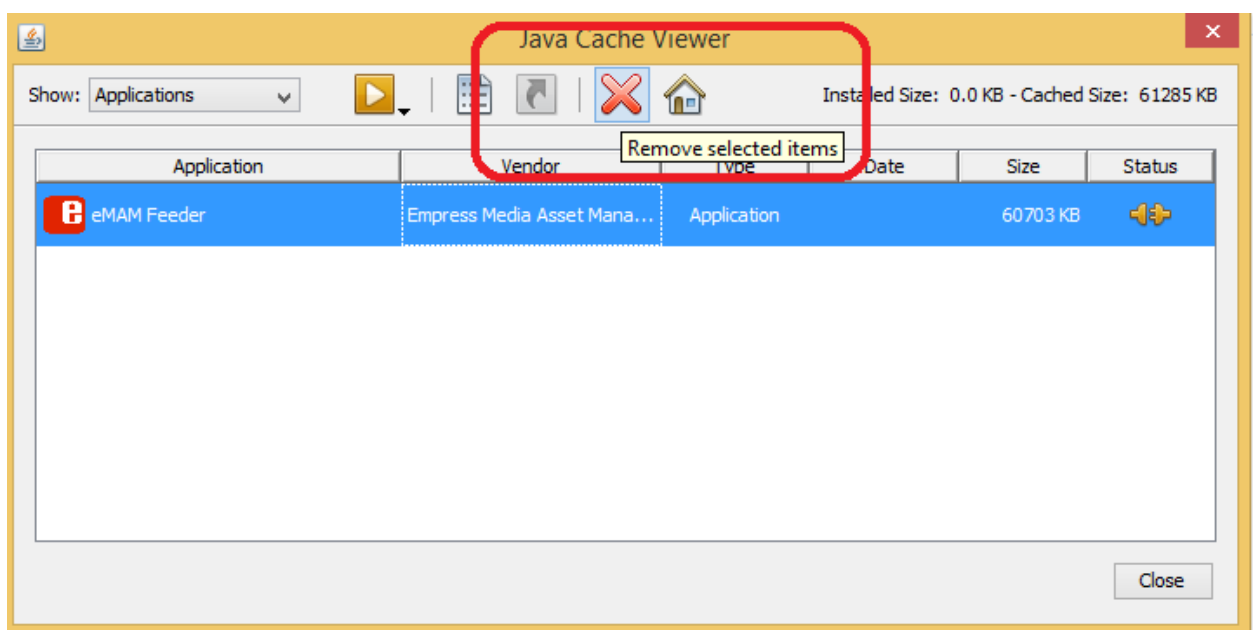
- Please open control Panel and look up Java.



- Clicking on the Java icon will popup Java Control Panel. On Java control panel please click on View button.



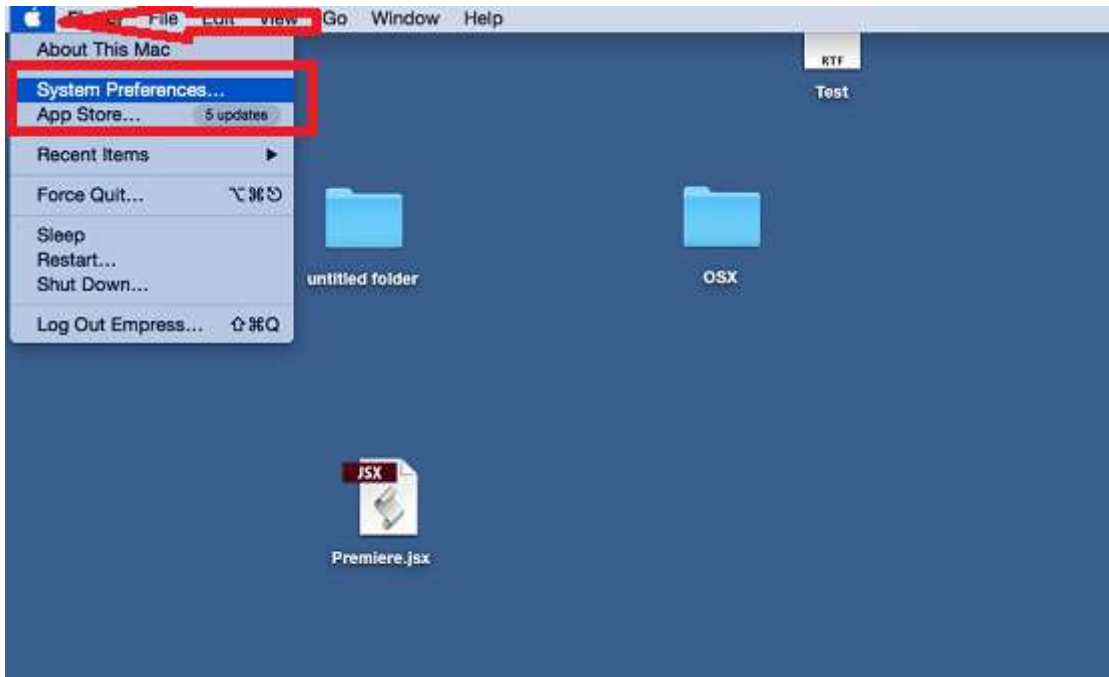
- Clicking on view button will popup Java Cache Viewer. eMAM Feeder will be listed under Applications.
- Please click on eMAM Feeder and then the X button will remove eMAM Feeder from your machine.



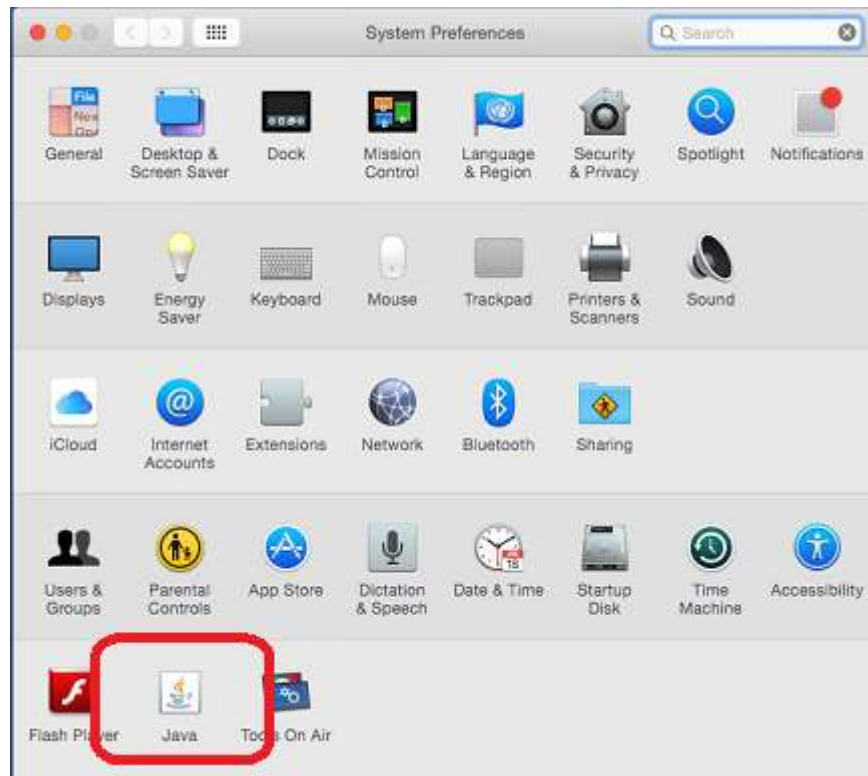
Steps to remove eMAM Feeder (MAC).

Please follow the below steps to remove eMAM Feeder from MAC.

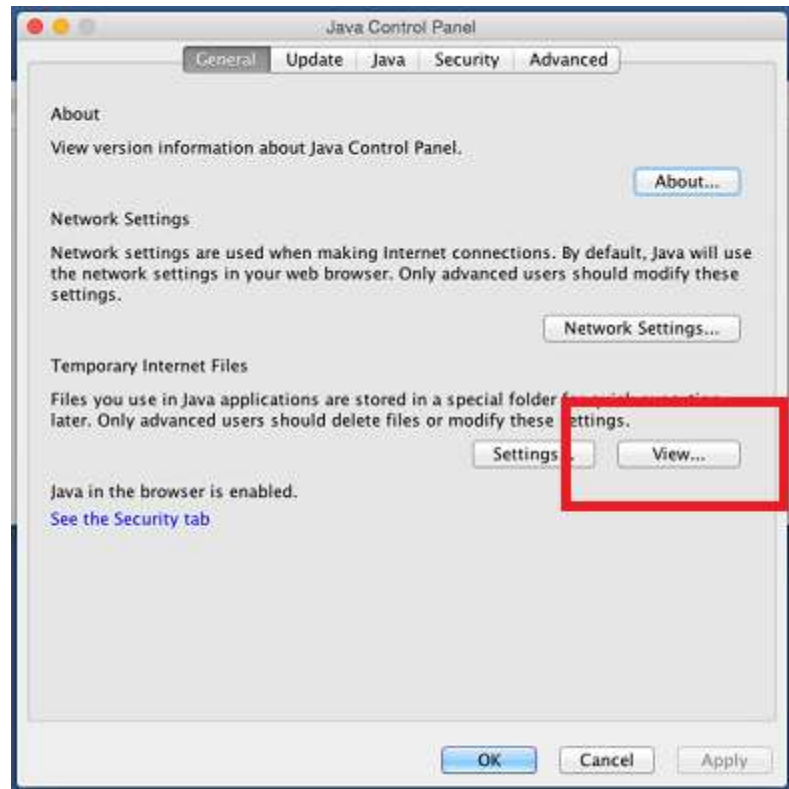
- Please click on System Preference. Which will be available as a drop down menu when we click on the apple icon on the top left corner.



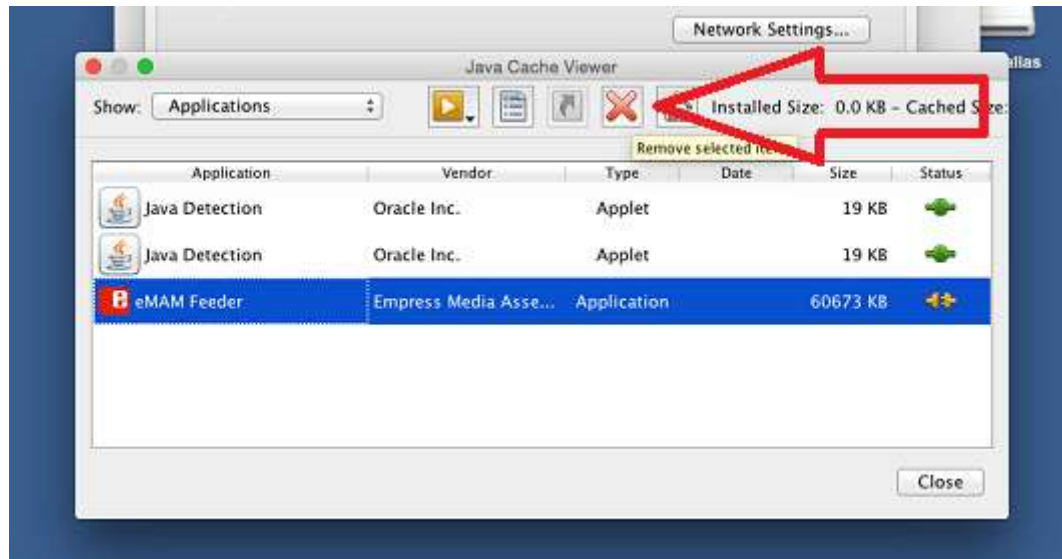
- Please lookup Java on System Preference window.



- Clicking on Java icon will popup Java Control Panel. Please click on the View button.



- Now you will be able to see Java Cache Viewer. Under Applications on Java Cache Viewer eMAM Feeder will be listed. Clicking on eMAM Feeder will enable an X button on the same window. Clicking on that X button after selecting eMAM Feeder will remove eMAM Feeder from your MAC.



- Now you can close Java Cache Viewer window and click ok on Java control panel.
eMAM Feeder is now removed from your MAC.

If you are facing any trouble performing the above steps, please contact your immediate contact/support person or eMAM Technical Support.

<http://empressmam.com/support.htm>