



Release Notes

eMAM Version 5.3

Sept 2021

Notice

The content in this document represents the current view of EMAM, Inc. as of the date of publication. As EMAM responds continually to the changing market conditions, this document should not be interpreted as a commitment on the part of EMAM. EMAM, Inc. cannot guarantee the accuracy of any information presented after the date of publication.

EMAM is a US registered trademark of Empress Media Asset Management and is used by permission. eMAM logos are US registered trademarks of EMAM, Inc.

Information in this document is subject to change without notice.



Table of Contents

TABLE OF CONTENTS	2
INTRODUCTION	4
DOCUMENT PURPOSE	4
WHAT'S NEW AT A GLANCE	4
1. <i>Direct Cloud Offerings</i>	<i>4</i>
2. <i>Improved sharing and streaming</i>	<i>4</i>
3. <i>Expanded & Diverse storage & archive options.....</i>	<i>4</i>
4. <i>Upgraded Web Interface Editing</i>	<i>4</i>
5. <i>Better ingest tools</i>	<i>4</i>
6. <i>Better control.....</i>	<i>5</i>
7. <i>Accelerated search and browse features.....</i>	<i>5</i>
NEW FEATURE & ENHANCEMENT HIGHLIGHTS	5
1. <i>Introduced eFeeder (Electron Feeder)</i>	<i>5</i>
2. <i>Package assets using ATEME Titan File</i>	<i>7</i>
3. <i>Stitch and Deliver using Elemental MediaConvert</i>	<i>9</i>
4. <i>Extended support for Azure BLOB.....</i>	<i>9</i>
5. <i>Introduced "Instant" asset.....</i>	<i>10</i>
6. <i>Create a high-resolution cloud workflow with NICE DCV</i>	<i>13</i>
7. <i>Collaboration with Microsoft Teams</i>	<i>13</i>
8. <i>Collaboration with Vimeo for enhanced content delivery</i>	<i>13</i>
9. <i>Integration with Xendata</i>	<i>13</i>
10. <i>Adobe Applications & CEP versions</i>	<i>13</i>
eMAM DIRECTOR INTERFACE	14
1. <i>Advanced Metadata tagging-</i>	<i>14</i>
2. <i>Get Image insights with Amazon Rekognition.....</i>	<i>15</i>
3. <i>Introduced "Asset Metrics" tab under the Analytics</i>	<i>15</i>
4. <i>Introduced "Batch user import".</i>	<i>16</i>
5. <i>Introduced "Workflow" dashboard</i>	<i>17</i>
6. <i>Improved Browse Widget:</i>	<i>18</i>
a. <i>Introduced Category view</i>	<i>18</i>
b. <i>Export all asset data in the Browse widget.....</i>	<i>20</i>
c. <i>New icon for Project assets</i>	<i>21</i>
7. <i>Improved Categories Widget.....</i>	<i>21</i>
a. <i>List as you type</i>	<i>21</i>
b. <i>Category ID.....</i>	<i>22</i>
8. <i>Improved Project widget</i>	<i>22</i>
a. <i>Introduced option to filter projects.....</i>	<i>22</i>
b. <i>Added "Project ID" for projects.....</i>	<i>23</i>
c. <i>Option to show / hide empty collection in project widget:.....</i>	<i>23</i>
d. <i>Introduced an option to remove projects from Collections.</i>	<i>24</i>
9. <i>Improved Admin Tools page.....</i>	<i>24</i>
a. <i>Introduced option to generate the API keys</i>	<i>24</i>
b. <i>Renamed "Domain" to " Domain user Id".</i>	<i>24</i>
10. <i>Support for playing multiple embedded audio tracks</i>	<i>25</i>
11. <i>Support "Instant asset" workflow:</i>	<i>26</i>
12. <i>Save Advanced Search parameters with workspace settings</i>	<i>27</i>
13. <i>Option to search projects.....</i>	<i>27</i>
14. <i>On Ingest assign assets to different projects under the Collections.....</i>	<i>28</i>

15.	Option to add "Author" for Project assets	28
16.	'Thesaurus' unchecked by default in the Advanced Search window	29
17.	Clear icon option for Basic search	29
eMAM PREMIERE PANEL		30
1.	Provision to add bin structure as categories in eMAM.....	30
2.	Option to select project Collections during export from Premiere	30
3.	Export multiple elements pointing to same media	32
4.	Export subclips created in Premiere	33
5.	Support for "Instant asset" ingest profiles	33
eMAM AFTER EFFECTS PANEL.....		34
1.	Added option to choose project Collections on the export	34
2.	Export multiple elements pointing to same media	34
3.	Support for "Instant asset" ingest profiles	35
eMAM INDESIGN PANEL		36
1.	Access Collections	36
eMAM SUPER ADMIN INTERFACE		37
1.	"OAuth" Authentication type in workflow management	37
2.	Ingest notification to the user who ingested the content	37
3.	Added option for archive/restore notifications	37
4.	Introduced AWS Elemental MediaConvert for Lambda delivery	38
5.	Introduced a "Restore Archived assets" checkbox option in workflow Delivery action.....	38
6.	Introduced "Save as" option to duplicate Delivery profiles	38
7.	Introduced "DAC ALTO Connect" as new archive type	39
8.	Added "Ingest Description" as a variable in the workflow conditions.....	39
9.	Introduced option to edit the Super Admin Account email address	39
10.	Introduced Instant Asset as new Xcode type.....	40
11.	Included Today() option in the filter search and workflow conditions	40
12.	Added "Create Proxy" as a new Action type in Workflows	41
FEEDER (JAVA) & EFEEDER		43
1.	Support "Instant asset" workflows	43
OTHER CHANGES.....		44
GET HELP		45

Introduction

eMAM™ is a powerful media asset management platform that provides users an intuitive web interface to collaboratively produce, share, and deliver video and other media. EMAM, Inc. has taken a ground-breaking approach to create a flexible, feature-rich, and modular digital asset management platform. Artists and designers use integrated tools inside Adobe Creative Cloud and Apple Final Cut systems. With built-in tools and over 80 technology partners, eMAM manages native resolution files and integrated workflow processes needed by leading organizations worldwide, since 2006, in local, cloud, and hybrid environments. Our continued endeavor is to give our customers a feature rich and a stable product. EMAM, Inc. has always been in the forefront to adapt and adopt to cutting edge technologies and provide our customers with the best in breed integrations to meet their ever-evolving media workflow needs. EMAM, Inc. continues to strengthen its core eMAM product line to manage digital workflow processes for its customers and is committed to provide its customers best in class technology workflow solutions with seamless user experience.

EMAM, Inc. is delighted to roll out its latest eMAM version 5.3 enriched with some exciting new additions like eFeeder, packaged asset delivery using ATEME TITAN, stitch & deliver using Elemental MediaConvert, instant asset, improved editing tools like Adobe panels, Apple FCP extension, improved options in Admin Tools page, Browse, Category & Project widget, improved search, instant asset, additional storage and archive options, better control with Workflow dashboard, batch user import, asset metrics, , signed URLs, encryption and so on.

Document Purpose

The purpose of this document is to share our new features and enhancements that's released in eMAM version 5.3. This document explores the new features, enhancements or improvements applied in the eMAM 5.3 version to provide end users with some engaging experiences. For details on the bugs fixed with this release, you can refer [Bug Fixes eMAM 5.3](#) doc.

What's New at a Glance

1. **Direct Cloud Offerings:** eMAM Cloud available from [AWS Marketplace](#) and [Alibaba Cloud Marketplace](#) and [emamcloud.com](#) as [SaaS](#) and [PaaS \(Cloud Formation Template\)](#). eMAM now supports multi-server CFT deployments. AWS CloudFormation is an easy way to model a collection of related AWS and third-party resources, provision them quickly and consistently, enabling configuration compliance and faster troubleshooting.
2. **Improved sharing and streaming:** eMAM now offers additional streaming options with Wowza integration, proxy streaming and advanced sharing options like link & download external media, new sharing theme, stitch & deliver sequences, element choice and packaging assets with Ateame, Vimeo delivery and AWS MediaConvert for lambda delivery.
3. **Expanded & Diverse storage & archive options:** eMAM now has expanded its storage & archive options with [Qumulo](#) and Storage DNA integration, direct delivery to S3 with file acceleration, archiving with Xendata, transfer between AWS Glacier and Deep Archive, mezzanine purging, Azure Blob archive/restore, DAC Alto archive.
4. **Upgraded Web Interface Editing:** eMAM now offers improved editing workflows with Adobe panels, cloud/remote editing with AWS, [Lucid Link](#), NICE, and Teradici, [sequence stitching & delivery](#), import bin structures as categories form NLEs, project collections etc.
5. **Better ingest tools:** eMAM supports [live multicamera ingest](#), [edit while capture](#), new electron feeder app, placeholder assets, Epiphan SRT.

6. **Better control:** eMAM now offers better control with options like add and deliver associated files, admin-enabled workflow monitoring, scheduling metadata, notifications for archive & lambda delivery, updated Zapier integration, signed URLs, encryption, improved automation tools, OKTA, OAuth & Azure AD authentication, project collections, asset metrics, custom metadata for markers and subclips, Slack and Team.
7. **Accelerated search and browse features:** eMAM offers improved search with thesaurus, learning tool for *Azure Computer Vision Faces AI*, image insights with *Amazon Recognition*, Shutterstock library management, multi-track audios.

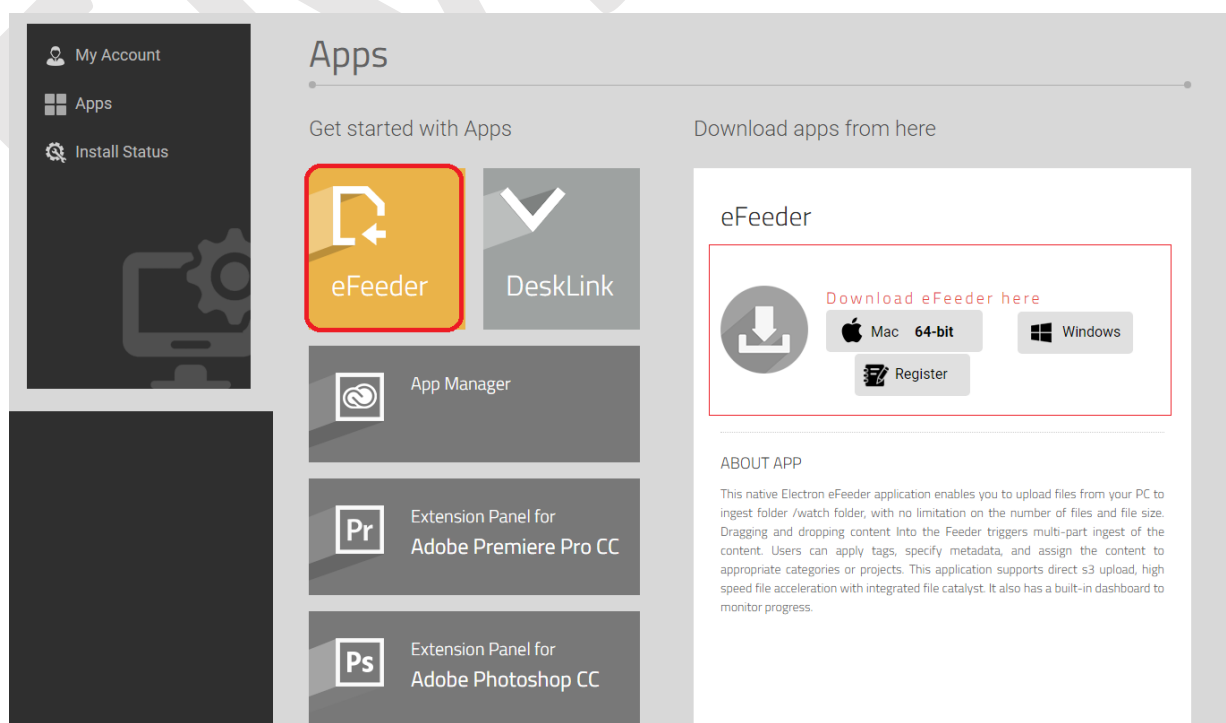
NEW FEATURE & ENHANCEMENT HIGHLIGHTS

1. Introduced eFeeder (Electron Feeder)

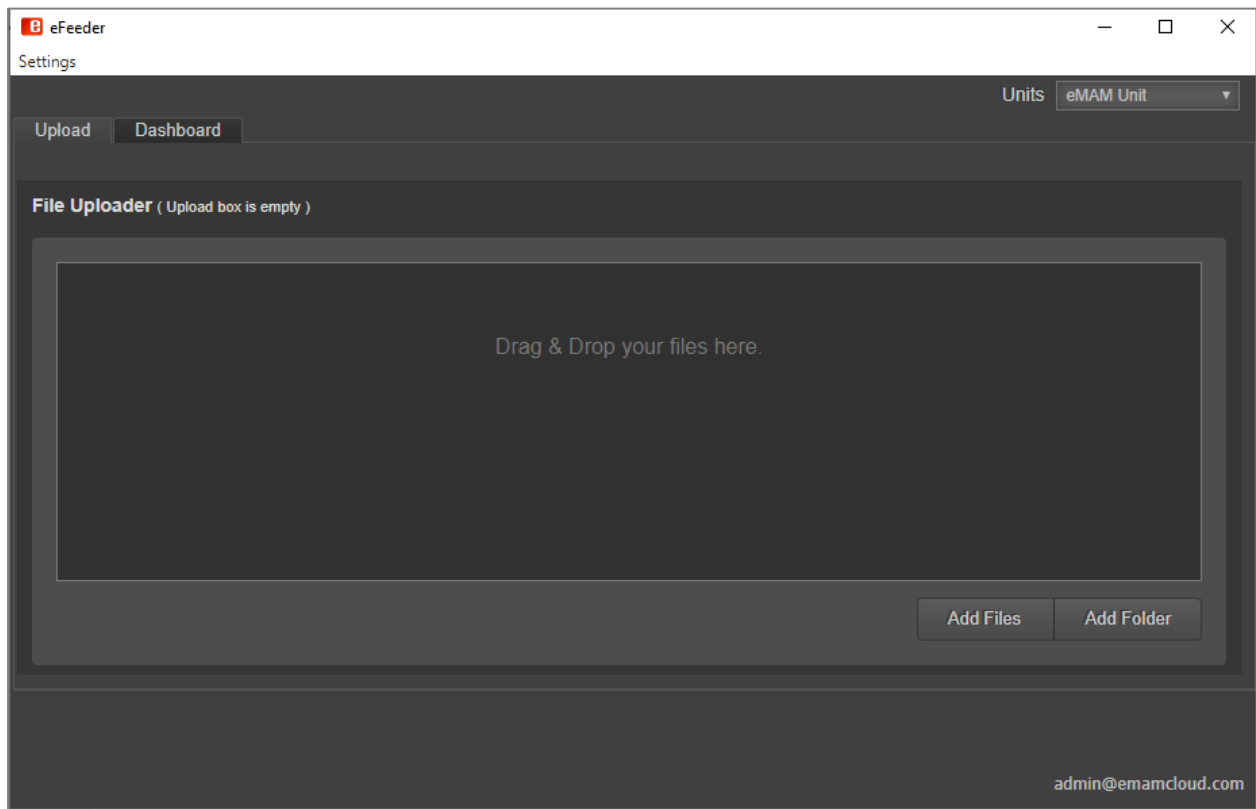
eFeeder is a desktop application built using **electron** framework for *Windows* and *Mac* machines. It allows secure ingest, categorization, and tagging of assets into the eMAM system. . This native eFeeder enables you to upload files from your PC to any ingest location. With no restrictions on the file number and size, users can either drag & drop and upload the content or use the eFeeder buttons to add a set of files/folders for ingest. This eFeeder application supports direct S3, HTTP, FTP, SMB/CIFS/NFS and UDP upload. It also has a built-in dashboard to monitor the real-time progress of uploads and an option to resubmit the failed entries. The eFeeder has several other useful features, such as simultaneous bulk upload, folder upload, metadata insertion, tagging, and assigning the contents to appropriate categories or projects etc. Users can tag content and specify folder and category locations. In the *Settings* option, you have option to enable/disable progress bar during upload.



eFeeder can be easily installed on *Windows* or *Mac* machines from *eMAM Director>My Account>Apps* page.

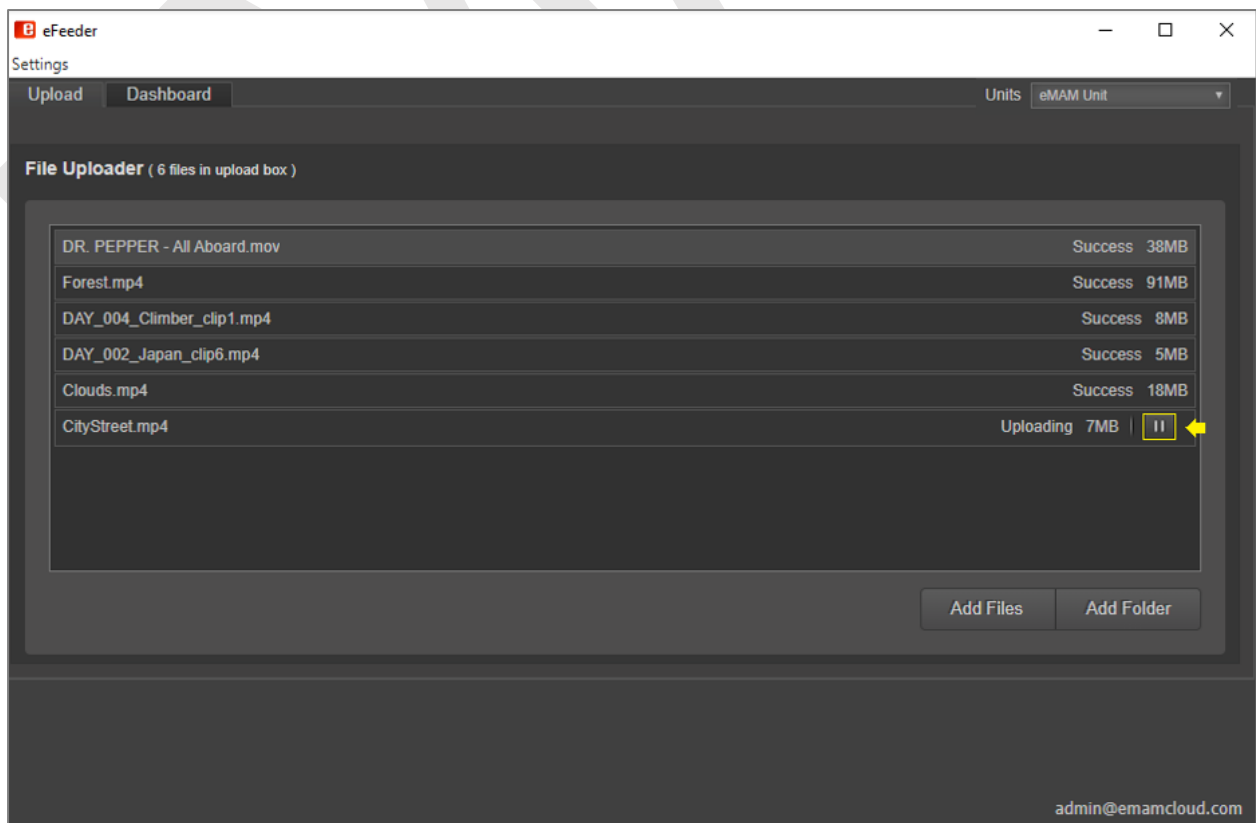


Once installed, eFeeder app can be registered to point to different eMAM systems. eFeeder app opens up (as shown below).

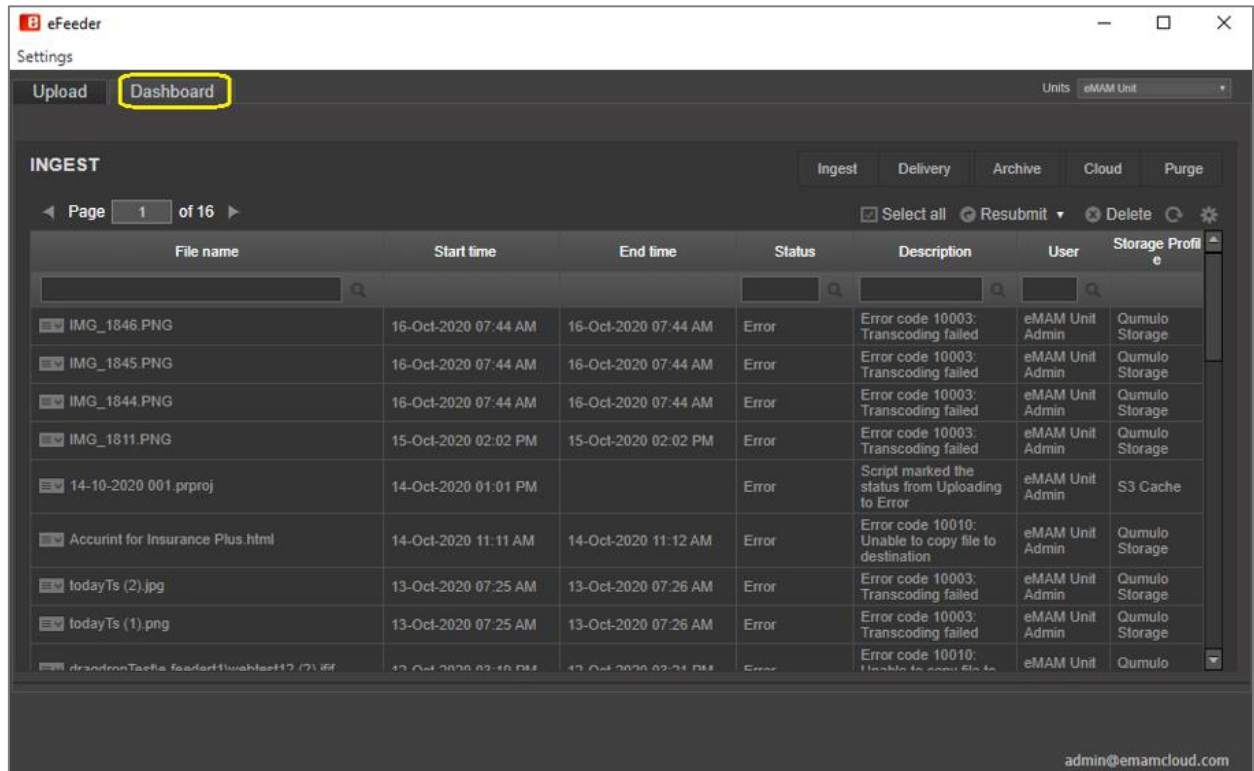


eFeeder has two tabs:

- Upload:** Under **Upload** tab, you have options to add files/folders and upload them to the eMAM system.



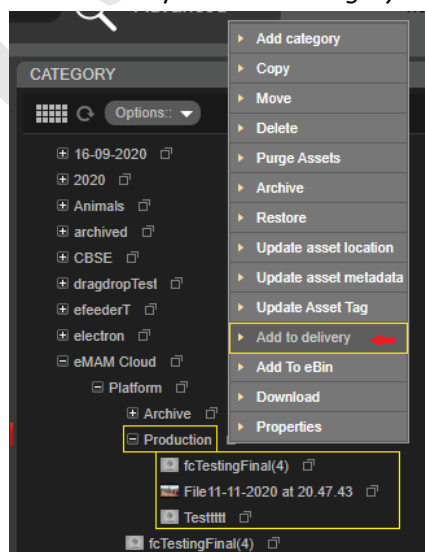
- b. **Dashboard:** Under **Dashboard** tab, you can monitor the real time progress of all the uploads in the Ingest queue. Similarly, progress of all the jobs submitted for delivery, archive, cloud & purge can be viewed in the respective tabs.



2. Package assets using ATEME Titan File

EMAM is now integrated with **ATEME Titan** file transcoder for ingest and delivery workflows. ATEME delivery profiles support stitch and deliver workflows, i.e., assets can be packaged together (*video, audio, other files*) and can be delivered as one package to the defined locations. This packaging or stitching is based on the job presets configured at the delivery profile level. Different delivery profiles can be configured using different job presets.

- a. Users can initiate stitch and delivery of assets only from the *Category* widget.



- b. You will be then prompted to choose a delivery profile (pre-configured) as shown below.

Select Delivery Profiles

- ☐ Ateme-TitanFile-Individual-Delivery
- ☒ Ateme-TitanFile-Stitch
- ☐ Duplicate_Delivery
- ☐ Output_with_logo-P1+P2
- ☐ P0+P1+P2_Stereo_output
- ☐ Subclip

☒ Restore archived assets

☐ Rename duplicate filename(s) at the destination

☐ Keep source folder structure at destination

Add Cancel

- c. Select the pre-configured *ATEME Stitch* delivery profile. Note: *In the ATEME delivery profile, you need to “enable stitch” checkbox & add job presets to stitch all the assets submitted for delivery.*

Delivery Profile Users

Profile Name: Stitch & Deliver (ATEME)

eMAM Delivery Server: EMAMNYFS01

Delivery Type: Transcode Delivery

Transcode Server: Ateme Transcoder

☒ Enable Stitch

Job Preset:

```
<job version='3.9.5.0'>
<time>2020-09-17 21:22:35</time>
<name>source_file_ext</name>
<src>eMAM TITAN File Job 1.0</src>
<priority>normal</priority>
```

Rename duplicate filename(s) in the destination: ☐

Keep source folder structure at destination: ☐

Enable Notification: ☐

- d. A validation window (as shown below) is displayed. Based on the preset xml attached to the ATEME profile, eMAM will validate the files chosen for delivery. Users can use this window to correct the xml segments before submitting the job for final stitch delivery.

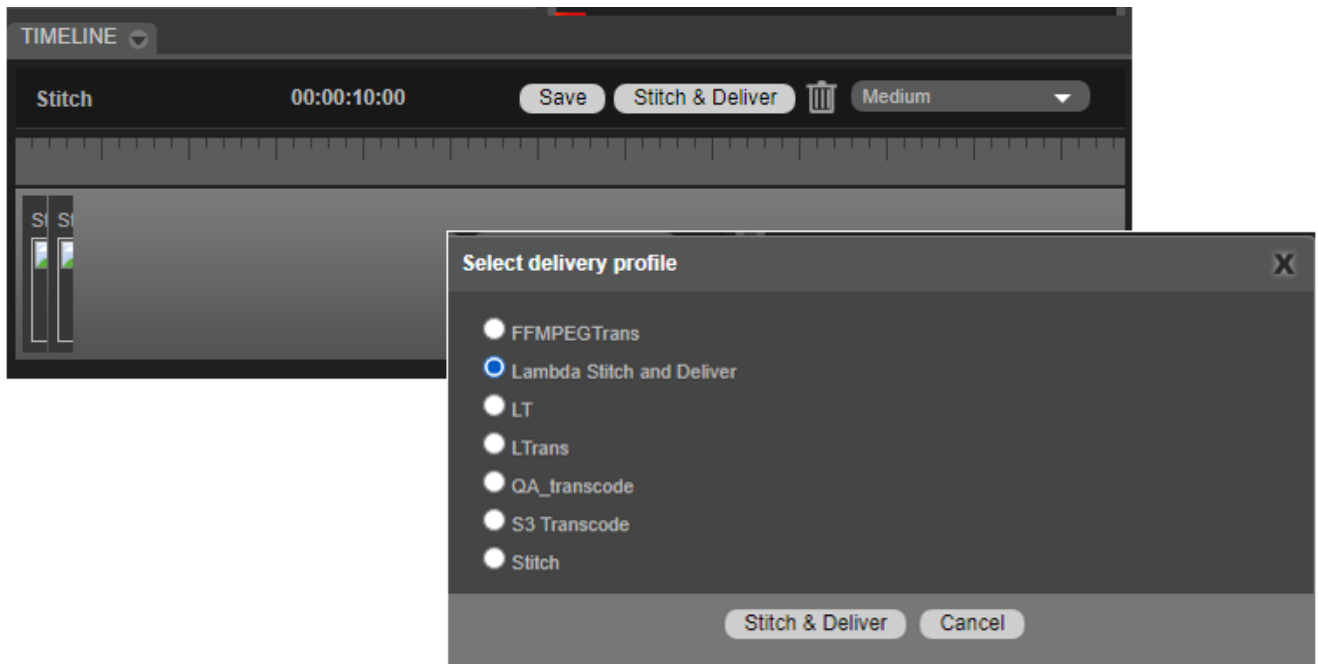
ATEME Delivery						
Delivery Profile : Ateme-TitanFile-Stitch						
Category : undefined						
Segment	Video	Audio	Subtitle			
1	Manmarziyaan P1	P1-FIV-5.1 audio wav	Manmarziyaan P1-SBT-arabic			
2	Manmarziyaan P2	P2-FIV-5.1 audio wav	Manmarziyaan P2-SBT-arabic			
Note: Please drag and drop the missing files from the table below!						
	Title	Asset Type	Extension	Size	Ingested On	Category
	Manmarziyaan CC	Video	mov	102.084 MB	04-Nov-2020	Movie_001
	Manmarziyaan CC-FIV-5.1 audio	Audio	wav	2.747 MB	04-Nov-2020	Movie_001
	Manmarziyaan CC-FIV-stereo audio	Audio	wav	938.344 KB	04-Nov-2020	Movie_001
	Manmarziyaan CC-MaE-5.1 audio	Audio	wav	2.747 MB	04-Nov-2020	Movie_001
	Manmarziyaan CC-MaE-stereo audio	Audio	wav	938.344 KB	04-Nov-2020	Movie_001
	Manmarziyaan P1	Video	mov	157.293 MB	04-Nov-2020	Movie_001
	Manmarziyaan P1-FIV-stereo audio	Audio	wav	859.971 MB	04-Nov-2020	Movie_001
	Manmarziyaan P1-MaE-stereo audio	Audio	wav	859.971 MB	04-Nov-2020	Movie_001

- e. If the selected files fail the validation (*missing files or naming standards not matching*), the missing file gets highlighted in red. Either you just need to choose the right files (listed below) and drag and drop it to the

highlighted area or cancel this window and go back and drag and drop the missing files to the selected category and then retry the delivery process.

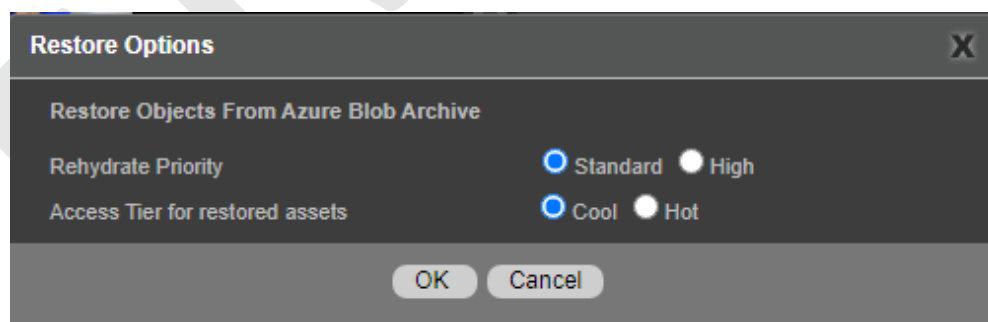
- f. Click *Ok* to queue these files for delivery. Delivery dashboard can be used to monitor the progress of the stitch operation.

3. **Stitch and Deliver using Elemental MediaConvert:** In addition to FFmpeg, eMAM now also supports stitch and deliver using Elemental Media Convert transcoder. Now you can stitch sequences and deliver from the Timeline widget using Elemental MediaConvert.



4. **Extended support for Azure BLOB "Archive" tier.** Along with Hot & Cool tiers, eMAM now supports archive/restore from "Archive" tier of Azure BLOB storage.

Archive tier - Optimized for storing data that is rarely accessed and stored for at least 180 days with flexible latency requirements, on the order of hours. Assets restored from Azure Blob Storage "Archive tier" will have below options:

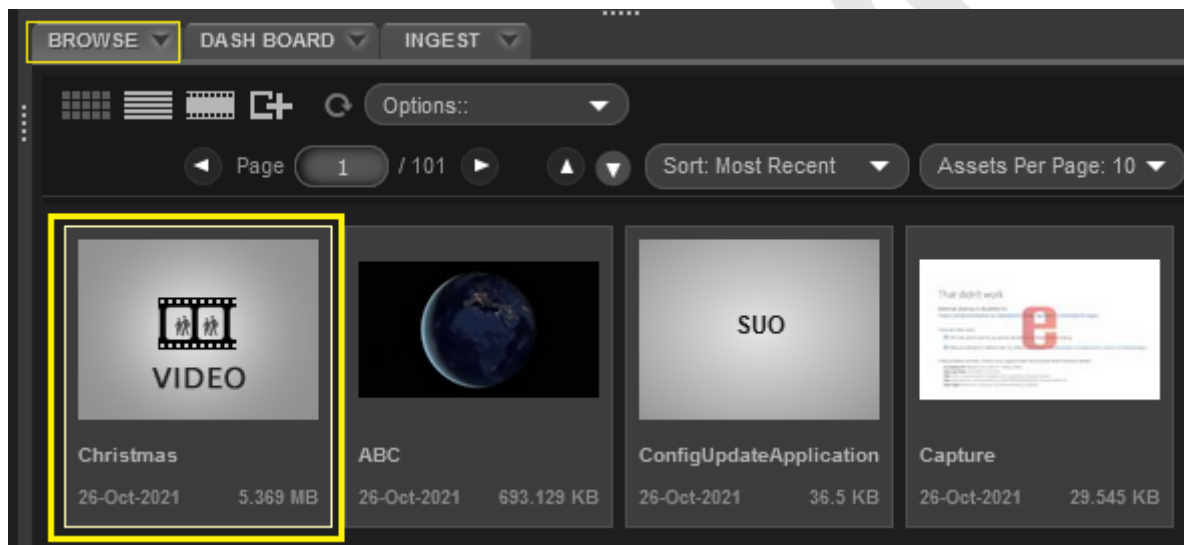


- Rehydrate priority: Choose any of the below:
 - a. **Standard priority:** The rehydration request will be processed in the order it was received and may take up to 15 hours.
 - b. **High priority:** The rehydration request will be prioritized over Standard requests and may finish in under 1 hour for objects under ten GB in size.

- Access Tier for restored assets: Choose any of the below:
 - a. **Hot** - Optimized for storing data that is accessed frequently.
 - b. **Cool** - Optimized for storing data that is infrequently accessed and stored for at least 30 days.

5. Introduced “Instant” asset

eMAM has introduced a new concept called “Instant” asset which means the assets will be instantly available to the users after ingest. Unlike before where assets were only available to the users in the UI/Browse widget only after the metadata extraction and proxy generation processes were complete, now the assets ingested to eMAM using “Instant asset” ingest profile will be available in the Browse widget (*without proxy*) as soon you hit *Upload* button. This original asset (without preview) in the UI can be downloaded, delivered and imported to Premiere and After Effects panels for editing.



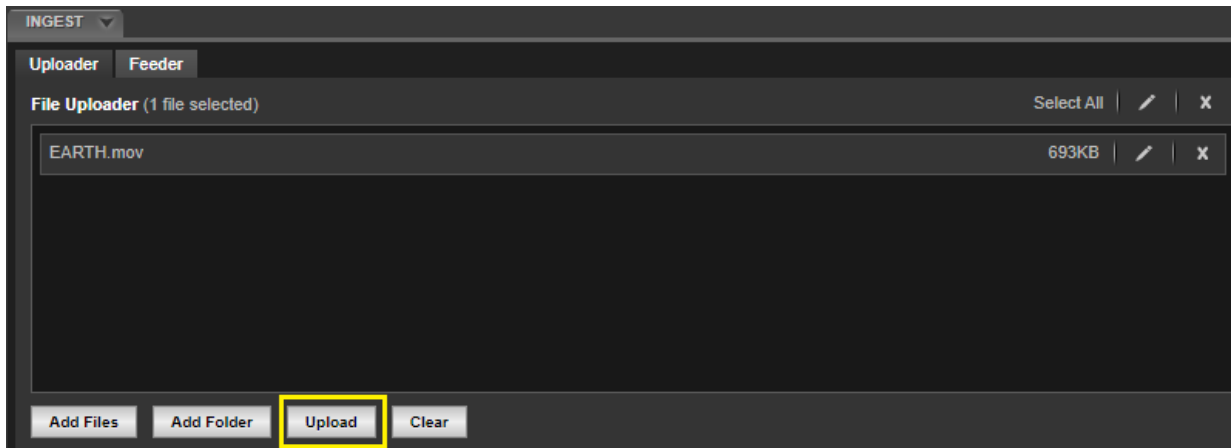
Note: For instant assets, proxies are not generated on ingest. Instead, they can be created with custom workflows like “create proxy” workflows.

The instant asset workflow includes:

1. The asset is ingested to eMAM via eFeeder, Web Uploader/ panels using *Instant ingest profile*.

ASSET METADATA	
Asset Details	
Title	EARTH
Description	
Author	
Ingest Profile	
Ingest Profile	Instant Ingest S3
S3 Transfer Acceleration	Disabled
MD5 Checksum	
Enable MD5 Checksum	<input type="checkbox"/>
Projects	
Categories	
Tags	
Custom Metadata	

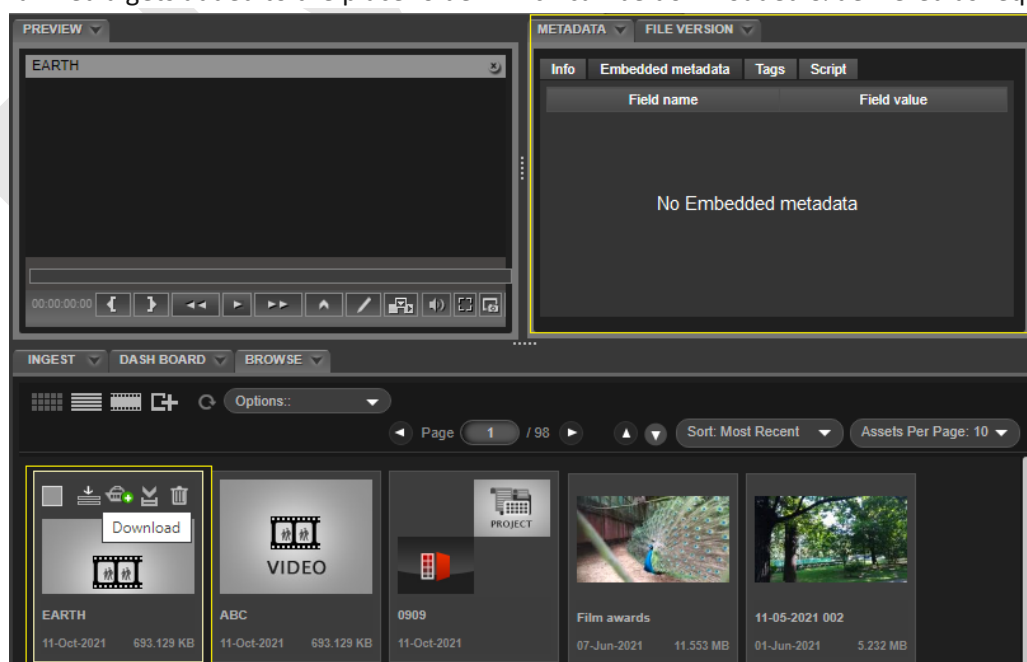
- The moment “Upload” button is clicked, a placeholder gets created in the Browse widget for the asset which will have associated custom metadata tags.



- Based on the storage location of the ingested asset, following happens:
 - Local assets are uploaded to the eMAM original folder.
 - Cloud enabled assets are uploaded to S3 buckets.
- As soon as the upload is complete, “Added status” is displayed in the dashboard widget.

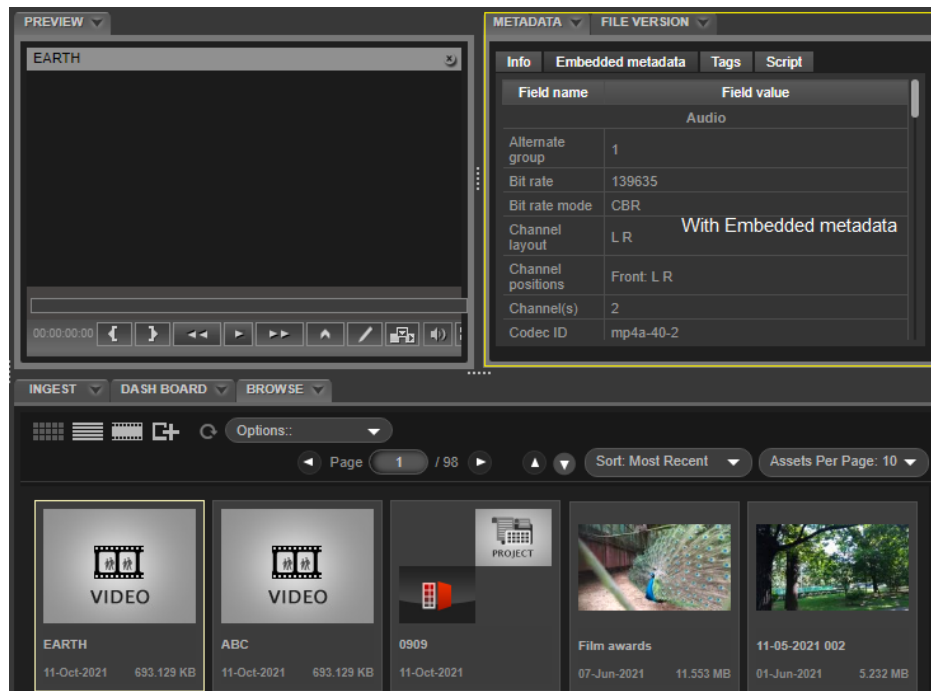
INGEST ▾ DASH BOARD ▾ BROWSE ▾							
Ingest Delivery Archive Cloud Purge Workflow							
Page 1 of 1		Select all Resubmit Delete					
File name	Start time	End time	Status	Description	User	Storage Pro file	
EARTH.mov	11-Oct-2021 09:54 PM		Processing	Extracting Metadata	Ajish Prabhakar	Instant Asset Storage (s3)	
emam_test79_obama-14.mp4	05-Oct-2021 08:19 PM	05-Oct-2021 08:22 PM	Error	Error code 10005: Unspecified error, Processing failed	Ajish Prabhakar	Instant Asset Storage (s3)	

- The original media gets added to the placeholder which can be downloaded & delivered as required.



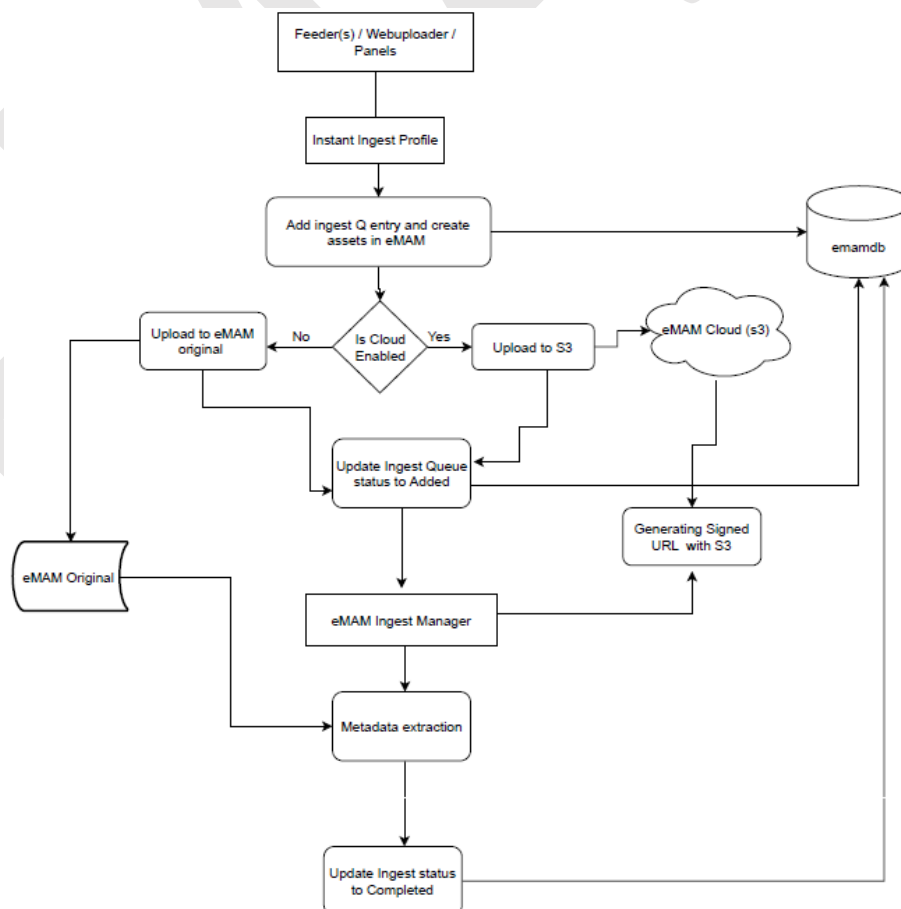
6. Metadata extraction:

- S3 assets: The ingest manager generates signed URL for assets in S3
- The ingest manager extracts embedded metadata.



7. The Ingest manager marks the status as *Completed*.

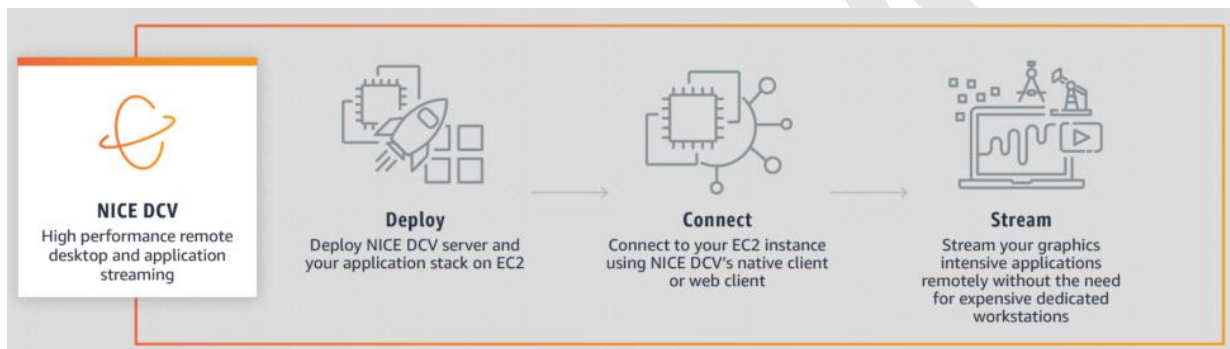
High level workflow diagram of *instant asset* is displayed below.



6. Create a high-resolution cloud workflow with NICE DCV

eMAM integrates with NICE DCV to create a high-resolution cloud workflow, optimized for under-powered CPUs. NICE DCV is a high-performance remote display protocol, providing customers with a secure way to deliver remote desktops and application streaming from any cloud or data center to any device, over varying network conditions. With NICE DCV and Amazon EC2, customers can run compute-intensive applications remotely on EC2 instances, and stream their user interface to simpler client machines, eliminating the need for local expensive dedicated workstations.

Prepare and manage media in eMAM, perform proxy edits in Adobe Premiere and After Effects and finish the higher-end editing of original media in NICE's DCV in the cloud. [Click Here](#) to know more about NICE DCV Hi-Res Cloud Workflow



7. Collaboration with Microsoft Teams

eMAM and Microsoft Teams have combined to form an accelerated review and approval workflow. Now you can notify your team in Microsoft Teams of completed work, directly from eMAM. [Click here](#) to know more.

8. Collaboration with Vimeo for enhanced content delivery

eMAM and Vimeo have teamed up to provide a comprehensive media production solution. From craft editing to worldwide collaboration, this workflow is equipped to handle the modern media landscape. [Click here](#) to know more.

9. Integration with Xendata

eMAM has revamped its integration with Xendata to provide a streamlined LTO archiving solution. Replicate entire LTO cartridges locally and in the cloud, all managed by eMAM's software. [Click Here](#) to know more.

10. Adobe Applications & CEP versions

Latest Adobe applications (2021) now use **Common Extensibility Platform (CEP) 11**. In order to support this version, the existing eMAM customers using Adobe Premiere Pro 2021 & Adobe After Effects 2021 need to upgrade their eMAM system to minimum version 5.2.18. You can open the Adobe Creative Cloud application and uninstall CEP 10 versions of Adobe Premiere and Adobe After Effects, if exist. During eMAM panel installation, eMAM App Manager will automatically detect the Adobe Application version and download appropriate CEP 10 or CEP 11 .zxp files. Note: *Keeping both the 2020 and 2021 versions of adobe products in the same machine can lead to unforeseen problems.*

Refer the below article link for the steps to follow to reinstall *App Manager* and eMAM panels for Adobe applications.

<https://support.empressmam.com/kb/a362/adobe-common-extensibility-platform-cep-11-upgrade.aspx>

Let's have a detailed look at all the new features and enhancements at different eMAM interface levels:

eMAM Director interface

1. **Advanced Metadata tagging- Subclips & Markers** : Now you can create custom metadata specific to subclips and markers and then associate it with the subclips and markers created for the video assets.

- i. Introduced **new Metadata Set types as "Markers" & "Subclips"**. Create metadata sets specific for markers and subclips.

Add Metadata Set

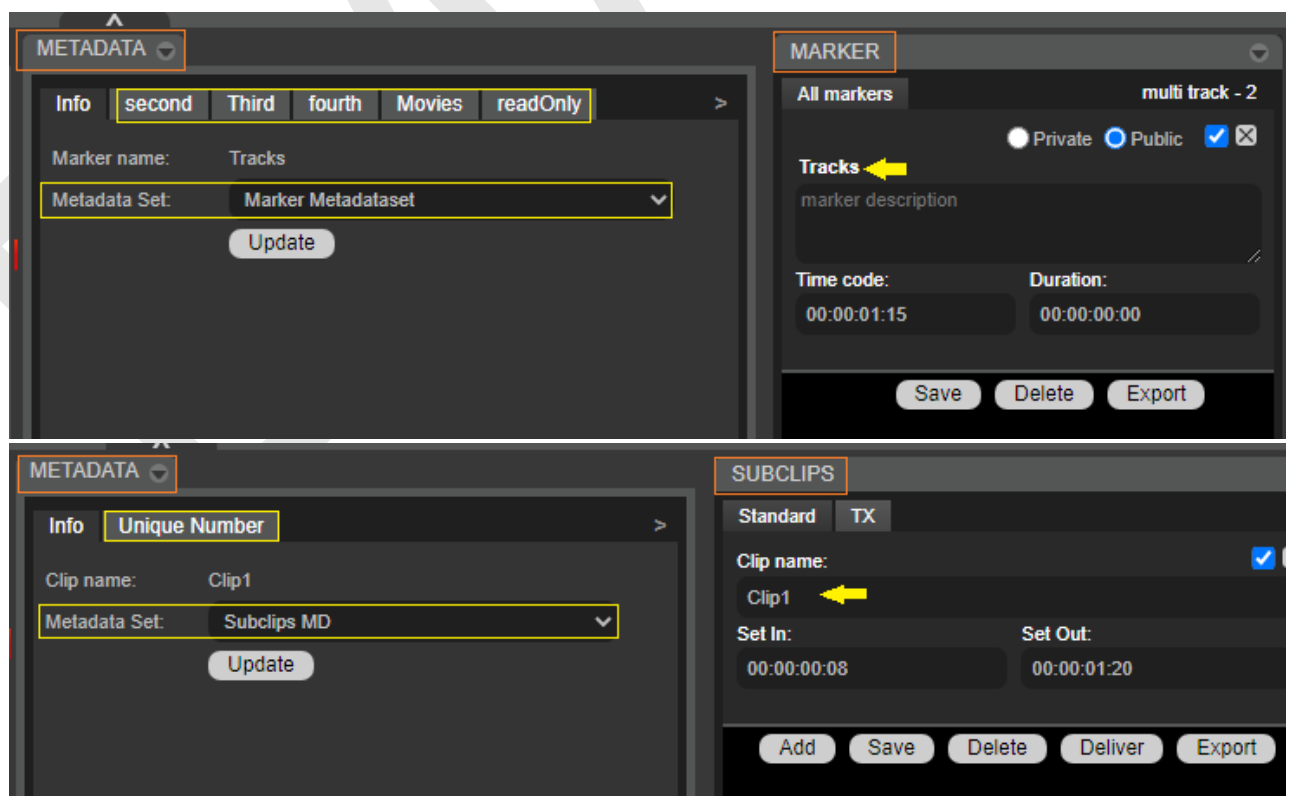
Set Name :

Description:

Set Type : ☐ Asset ☐ Project ☐ Category ☒ Marker ☐ Subclip

- ii. Click anywhere on the *Marker* and *Subclip* widget will automatically switch the *Metadata* widget to display the custom metadata associated with the Marker and Subclips respectively.

Note: Metadata widget switches to display Subclips & Markers metadata only if there are any subclip and marker associated metadata sets created in the unit.



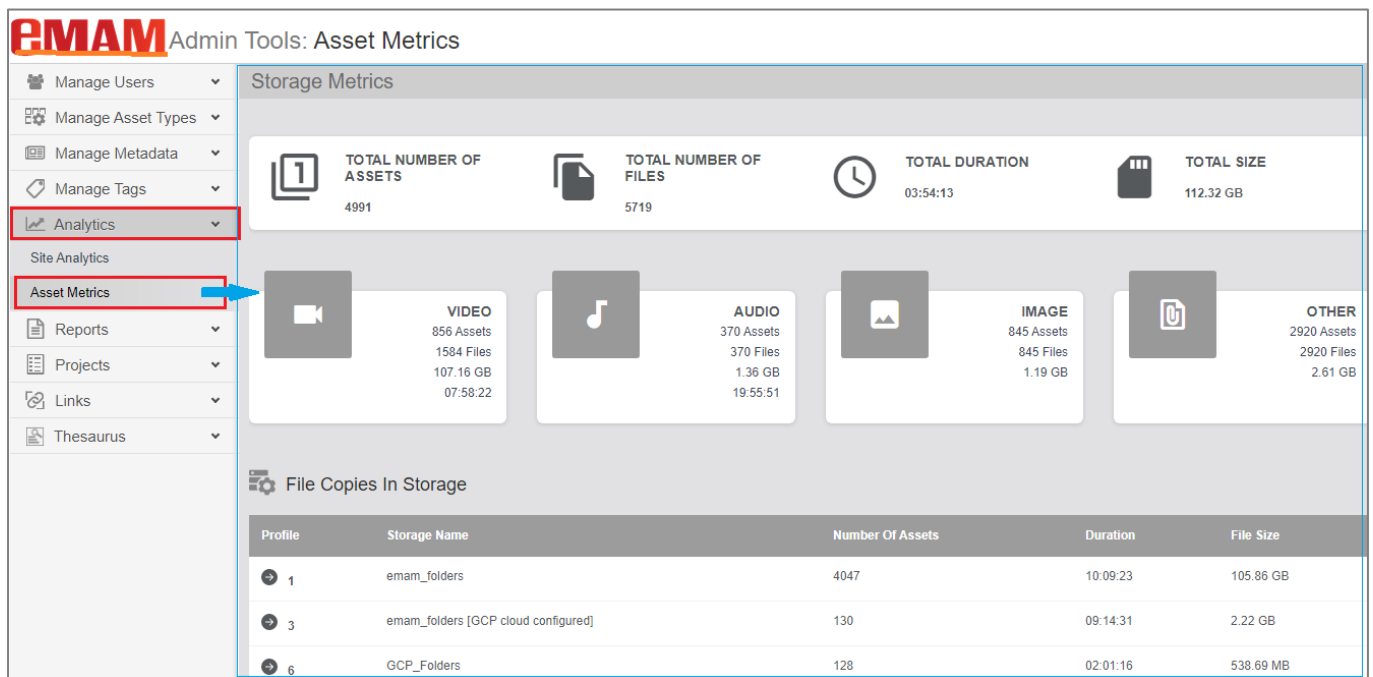
2. **Get *Image insights with Amazon Rekognition*.** eMAM tightly integrates with *Amazon Rekognition Image* which is a deep learning powered image recognition service that detects objects, scenes, and faces; extracts text; recognizes celebrities in the *Insights* widget.

- Detects Labels
- Detects Faces
- Detects Text
- Recognizes Celebrities
- Detects Moderation Labels



3. **Introduced “Asset Metrics” tab under the Analytics.**

In the Admin Tools page, under Analytics, a new “**Asset Metrics**” tab has been introduced. Here you can get all the asset metrics details like, total no. of assets in a unit, total no. of files, total duration of video and audio assets in that unit, Total size of assets in that unit and much more as shown below.



4. Introduced “Batch user import”.

Now you can easily import multiple users in batches using a spread sheet. User details exported from Active Directory or *Single Sign On* can be used to create eMAM accounts. Just fill in all the user details in the downloaded template, assign these users to desired user groups, ingest profiles. In the Admin Tools page, under *Manage Users*, a new *Batch Import* tab has been introduced to upload bulk users and create their account . eMAM accounts of all the users belonging to a particular user group or multiple user groups and projects, can be created in one shot.

Administrator can download the template to be used for uploading the user details, assign groups, projects and ingest profiles, can set the expiry date for users account, send links (Client, Director), control user login password and add additional comments.

The screenshot displays the eMAM Admin Tools web application. The browser's address bar shows the URL "10.0.8.232/eMAMDirector/AdminTools/BatchUserImport.aspx". The left sidebar contains a menu with items like "Manage Users", "Users", "User Groups", "Registration Form", "Batch Import" (highlighted with a red box and arrow), "Manage Asset Types", "Manage Metadata", "Manage Tags", "Analytics", "Reports", "Projects", "Links", and "Thesaurus". The main content area is titled "Batch Import" and features a central instruction "Select the input file (excel)" with "Browse File" and "Download Template" buttons. Below this are three columns of settings: "Groups" (with "User Group1" selected), "Project" (with "Test" selected), and "Ingest Profile" (with "ffmpeg (nocloud)" and "NetX" selected). At the bottom, there are fields for "Default Ingest Profile" (set to "ffmpeg (nocloud)"), "Account Expires" (set to "30-Sep-2021"), "Send Links" (checked for both "eMAM Client" and "eMAM Director"), "Prompt user to change password on first login?" (set to "No"), and a "Comments" field containing "Batch user import (Ingest)".

To import users, follow the steps below:

1. Under *Manage Users* tab, click on *Batch Import*.
2. Click on *Download Template* to download the template excel sheet used for import.
3. Fill in all the user details as per the template and save this file. (*Ensure all the mandatory fields are filled*).
4. Click on *Browse file* to browse and select the saved file from your machine.
5. Choose *Groups*, *Project* & *Ingest profiles* for the users.
6. Select a *default Ingest profile*.
7. Choose *Account expiry date* (if required) from the calendar.
8. Send Links: Enable *Client* &/Or *Director* checkboxes to send links to the users.
9. Prompt users to change password on login: Select *Yes* or *No*.
10. Comments: Add comments, if any.
11. Click on *Import* button which gets displayed as soon as you import your saved file. After this “*File import successful message appears*”.

Batch Import

users.xlsx

Import Cancel

☐ Groups

☒ unit group

☐ User Group1

☐ User Group2

☐ All Permission

☐ Project

☒ Test

☐ testsss

☐ fsdfsdfsdf fsdfsdfsdf fsdfsdfsdfsdf dsfsdfsdf sdfsdfsdfsdfsdf dsfsdf

☐ Ingest Profile

☒ ffmpeg (nocloud)

☒ ffmpeg (GCP)

☐ NetxCode (nocloud)

☐ NetX

Default Ingest Profile: ffmpeg (nocloud)

Account Expires: dd-MMM-yyyy


Send Links: ☒ eMAM Client ☒ eMAM Director

Prompt user to change password on first login? ☐ Yes ☒ No

Comments:

5. Introduced “Workflow” dashboard

A new “Workflow” tab has been added to the *Dashboard* widget to monitor execution status of the custom workflows created in the Super Admin interface. This is similar to the *Live Dashboard* for workflows in the Super Admin interface. The moment a workflow is triggered, unit admins can immediately see that workflow in the live dashboard with a series of its action, status and description of the executed workflow.

eMAM will report the success or failure of each workflow process and also if any issues that may arise during the execution of the workflow. Click on  icon corresponding to each workflow to expand and view the workflow chart/diagram and its progress.

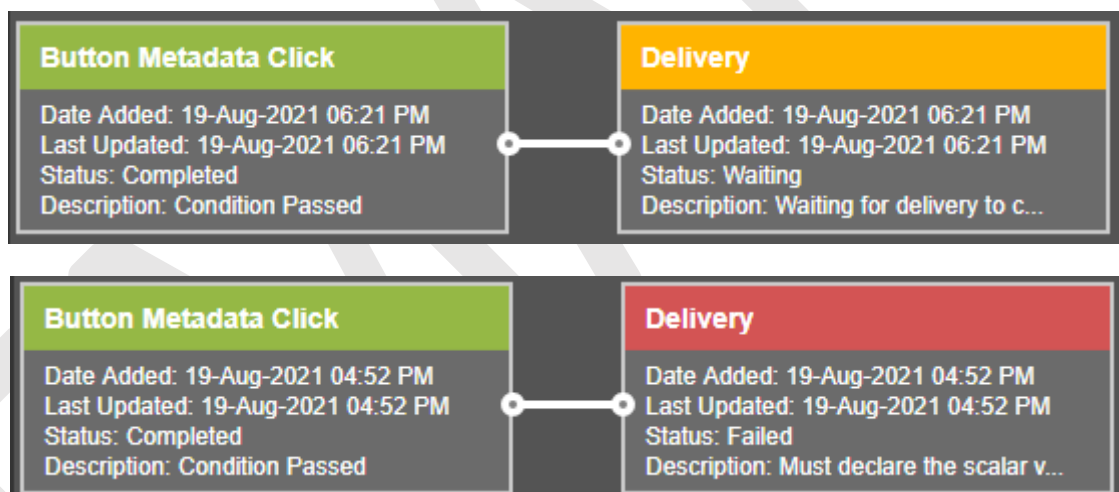
The screenshot shows the 'Workflow' tab in the eMAM DASH BOARD. It contains a table with the following data:

Title	Workflow Name	Start time	End time	Status	Description
sampleAPI_4.mov	ingest desc test	25-Aug-2021 09:30 PM	25-Aug-2021 09:30 PM	Completed	Workflow Ended Successfully!
sampleAPI_5.mov	ingest desc test	25-Aug-2021 09:37 PM	25-Aug-2021 09:37 PM	Completed	Workflow Ended Successfully!
sampleAPI_7.mov	ingest desc test	25-Aug-2021 09:51 PM	25-Aug-2021 09:51 PM	Completed	Workflow Ended Successfully!
24-08-2021 AME 020.mov	ingest desc test	24-Aug-2021 11:43 PM	24-Aug-2021 11:43 PM	Completed	Workflow Ended Successfully!

Below the table, a detailed view of the selected workflow action '24-08-2021 AME 020.mov' is shown, consisting of two connected boxes:

- Ingest** (Green header):
 - Date Added: 24-Aug-2021 11:43 PM
 - Last Updated: 24-Aug-2021 11:43 PM
 - Status: Completed
 - Description: Condition Passed
- Notify** (Green header):
 - Date Added: 24-Aug-2021 11:43 PM
 - Last Updated: 24-Aug-2021 11:43 PM
 - Status: Completed
 - Description: Notification Completed wi...

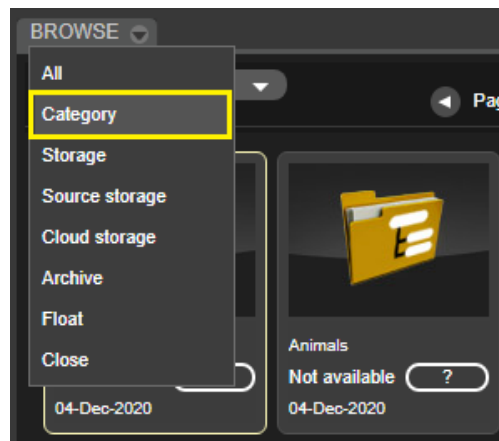
The status of each action is depicted by different colors: *Completed* – Green, *Failed* – Red, and *Waiting* – Orange.



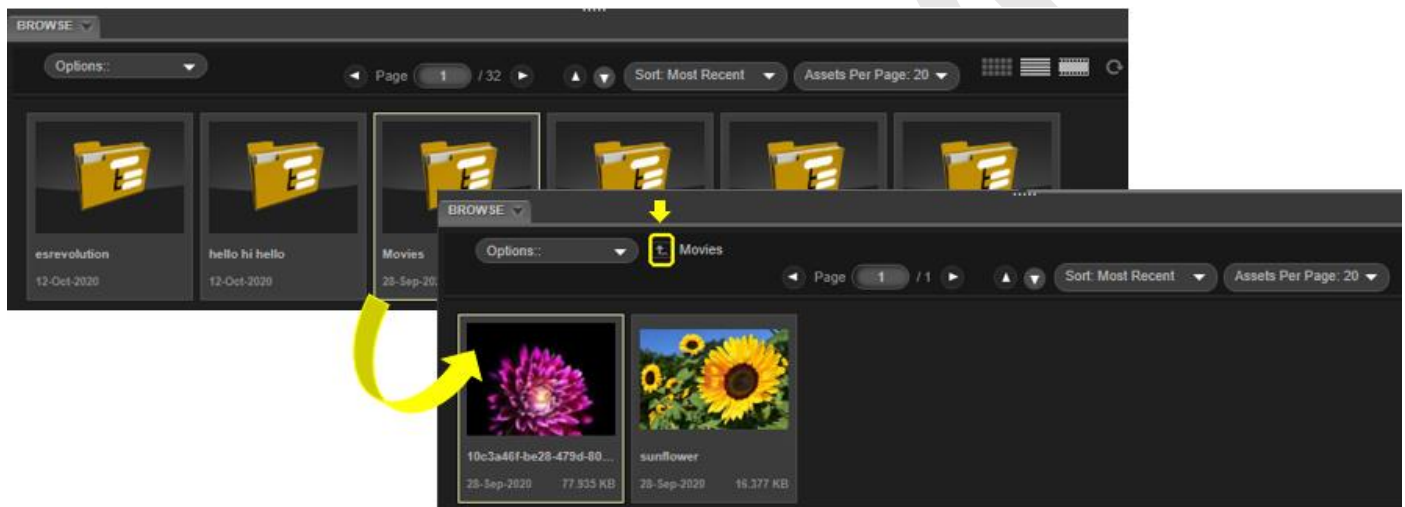
Note: The *Workflow* tab is only visible to Unit Admins.

6. Improved Browse Widget:

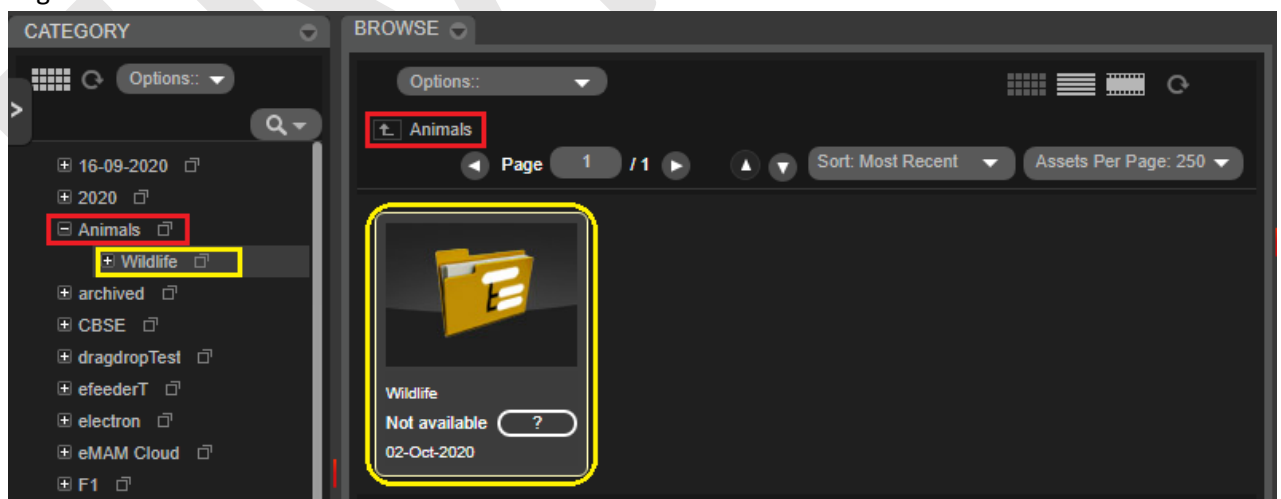
- Introduced Category view:** A new *Category* view has been introduced in the *Browse widget* to filter the assets based on categories they are associated with. In this category view, a basic search will display both categories and assets.



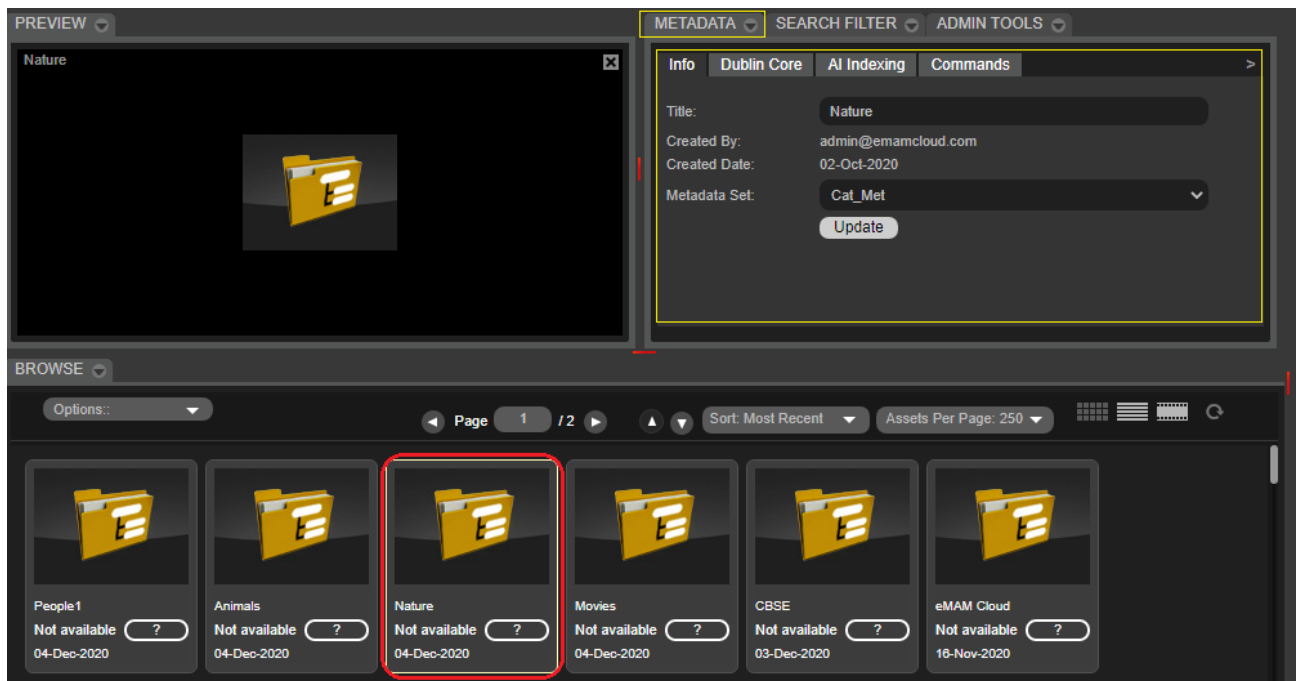
Click on the desired category folder to see the assets under each category/subcategory.



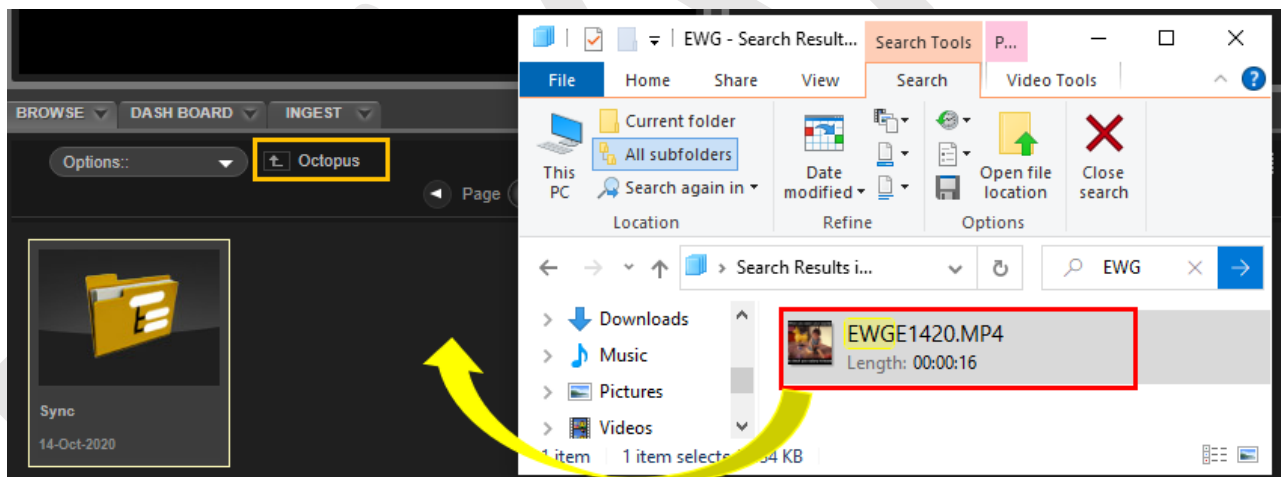
On opening the *Category* view in the *Browse* widget, automatically that category is selected in the *Category* widget.



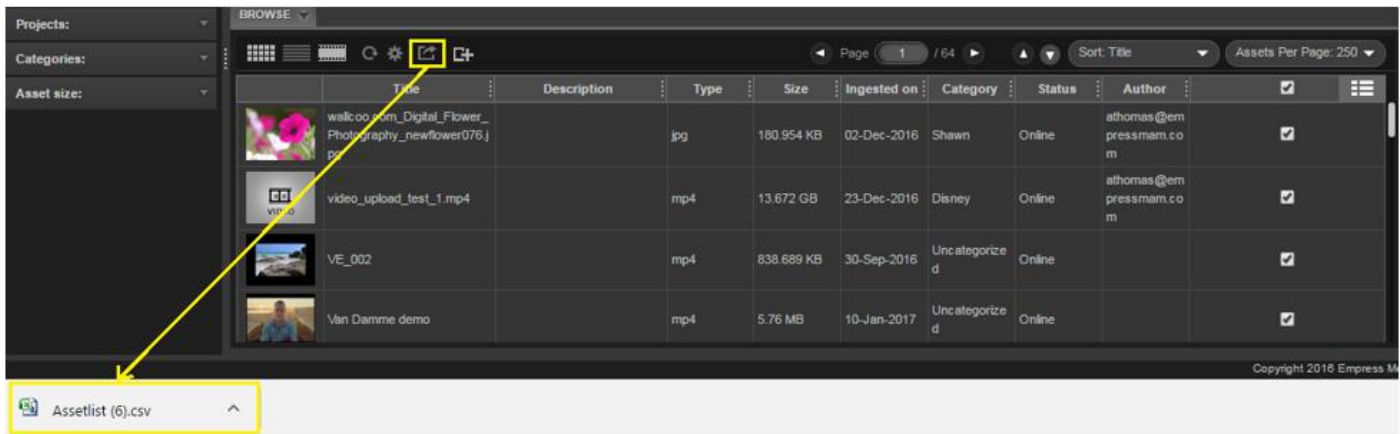
Category metadata details are displayed in the *Metadata* widget on clicking a category in *Category Browse* view.



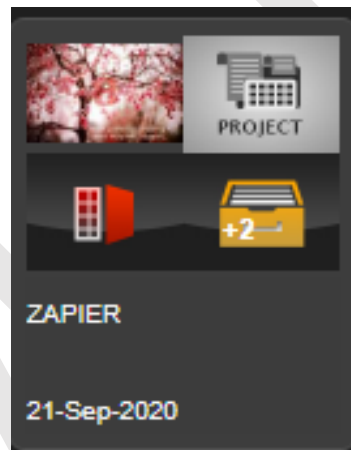
Ingest from Category view: In the *Category* view, you also have option to ingest files directly to any particular category. Just click on the specified category to open it and drag and drop the files to the *Browse* widget category area. *Asset Metadata* window opens up and the selected category is auto selected.



- b. **Export all asset data in the Browse widget:** Unlike before, where the asset list details could be exported only page by page, now you have option to export all the asset list (*all pages*) to an excel file, in just one shot.

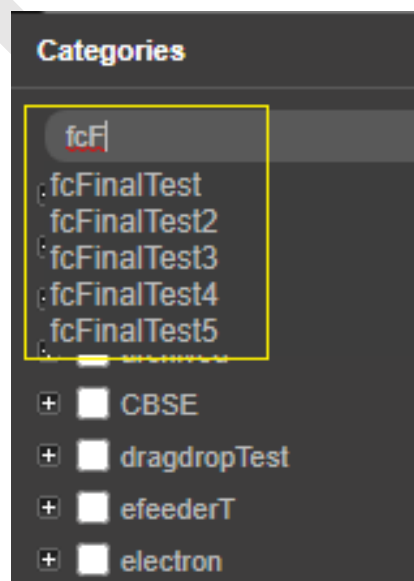


- c. **New icon for Project assets:** In the *Browse* widget, a new group icon for project assets (see image below) has been introduced. A project asset thumbnail is displayed as a group icon in the *Browse* widget. The top left of the project asset icon displays first few thumbnails of the assets/sequences inside the project, top right project asset icon, bottom left shows the project type like Premiere, eMAM etc. and the bottom right will display a collection image to indicate more contents inside the project, with their count.



7. Improved Categories Widget:

- a. **List as you type:** Easily search for categories in the *Ingest metadata* window with list as you type feature.



- b. **Category ID:** Introduced “**Category Id**” for categories under “*Properties*” window.

Properties

General Permissions Security

Category Id: 5453

Category Name: Debug

Created By: ajish@empressmam.com

Created On: 18-Feb-2021

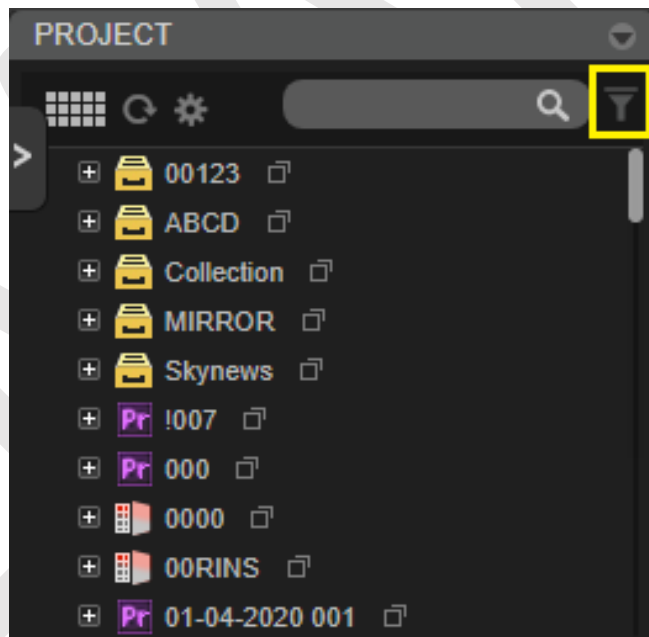
Metadata Set: Select

Save

8. Improved Project widget

a. Introduced option to filter projects.

In the Project widget, now you can search for projects using various filters including project properties like *project name, project description, public tags, metadata sets, project status, created by, created date* and custom metadata details.

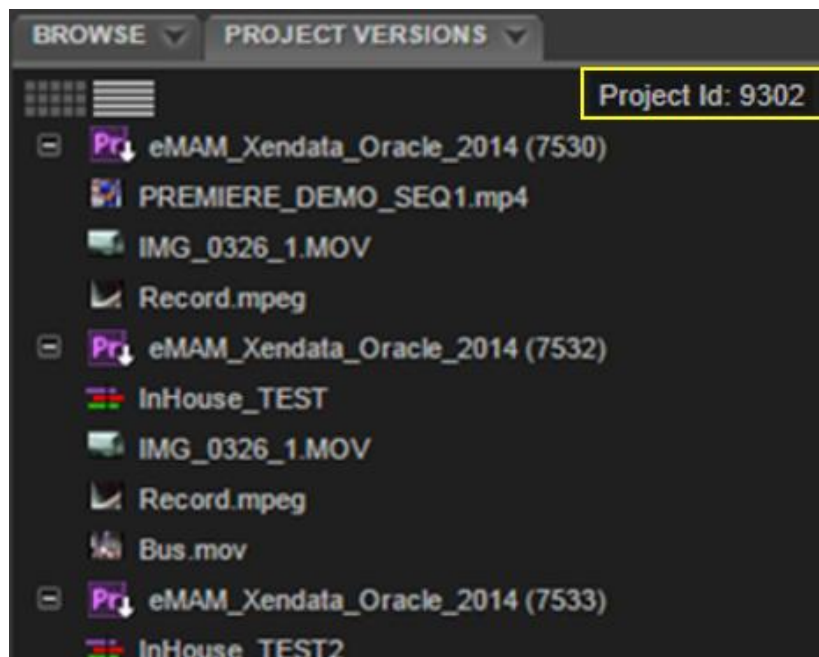


Advanced Project Filter

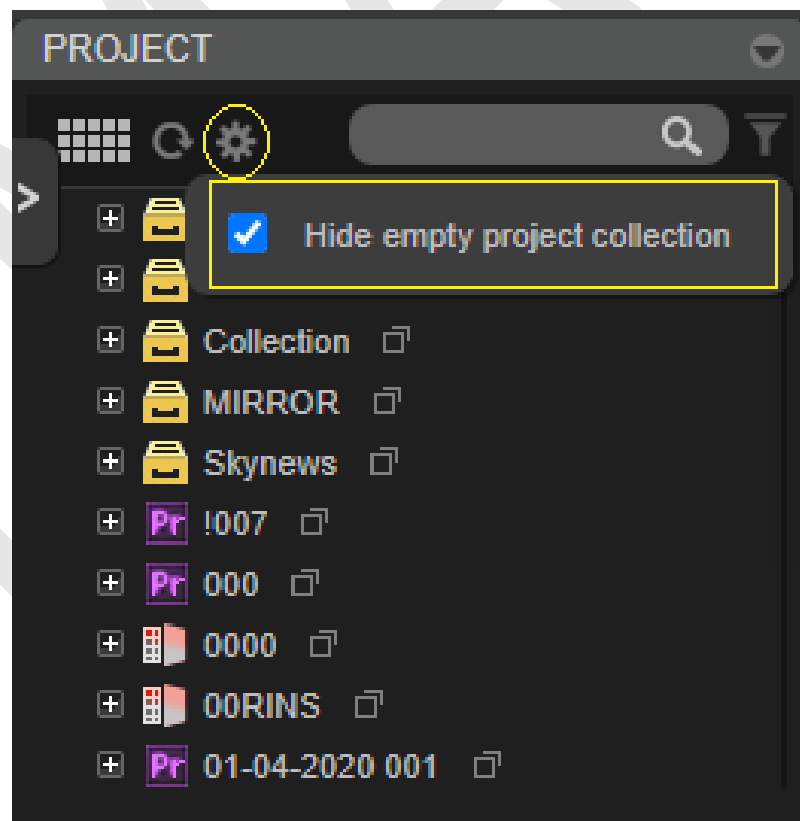
Search field	Condition	Value	Operator
Project name	Equals	ESR	Select

Search Reset Clear

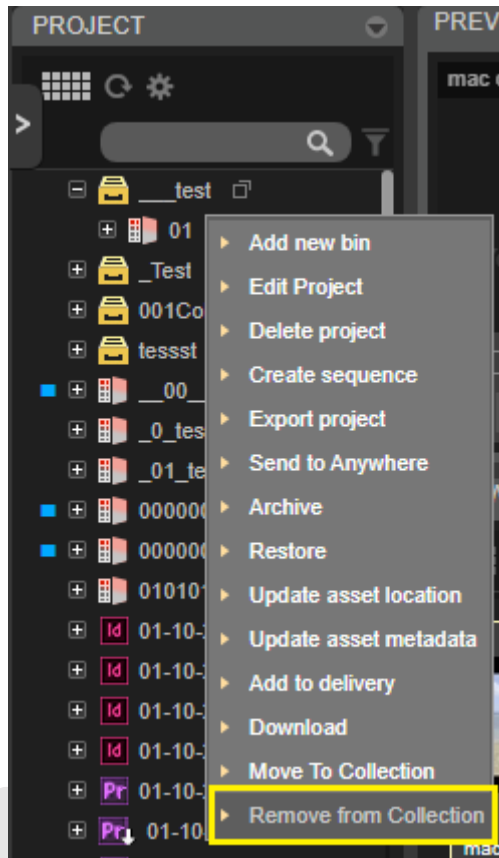
- b. Added “Project ID” for projects.



- c. **Option to show / hide empty collection in project widget:** A new checkbox has been introduced in the *Project* widget to *hide empty project collection*.



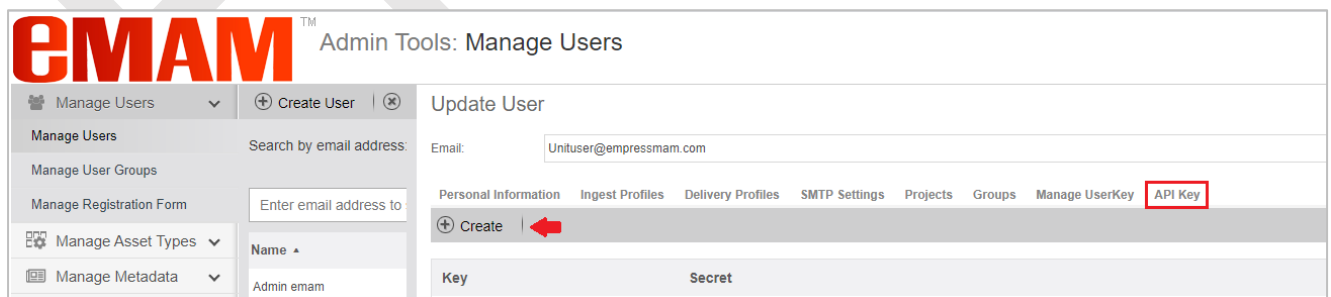
d. Introduced an option to remove projects from Collections.



9. Improved Admin Tools page

a. Introduced option to generate the API keys

In the *Admin Tools* page, now you have option to create API keys for users under new tab “API Key”. Just click on *Create* button to generate user *API Key* and *Secret* key. Using this API key, eMAM RESTful API resources can be accessed using basic authentication. No need to generate access token when using API key.



b. Renamed “Domain” to “Domain user Id”.

In the Admin Tools page, under Create user, “Domain” field has been renamed to “Domain User id”.

Create User

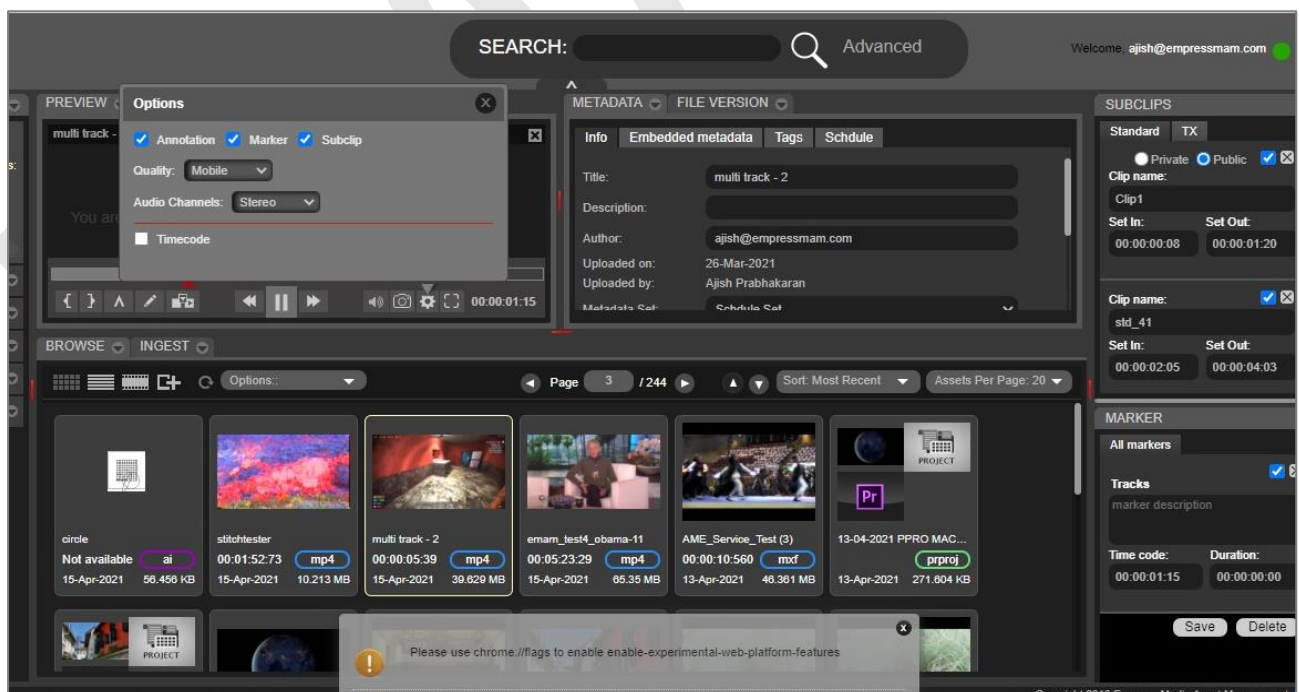
Email:

[Personal Information](#)
[Ingest Profiles](#)
[Delivery Profiles](#)
[SMTP Settings](#)
[Projects](#)

First Name : * Last Name : *
 Phone : * Mobile :
 Fax : Address1 : *
 Address2 : Address3 :
 City : * State : -- SELECT -- *
 Country : -- SELECT -- * Zipcode :
 Title: **Domain User ID:** *

10. **Support for playing multiple embedded audio tracks:** As of now, multiple embedded audio tracks was only supported by IE 11 browser but now Chrome browser has added this feature to its settings-experimental flags section. When eMAM player detects the multiple audio track assets, it displays below alert message to enable above feature in the browser.

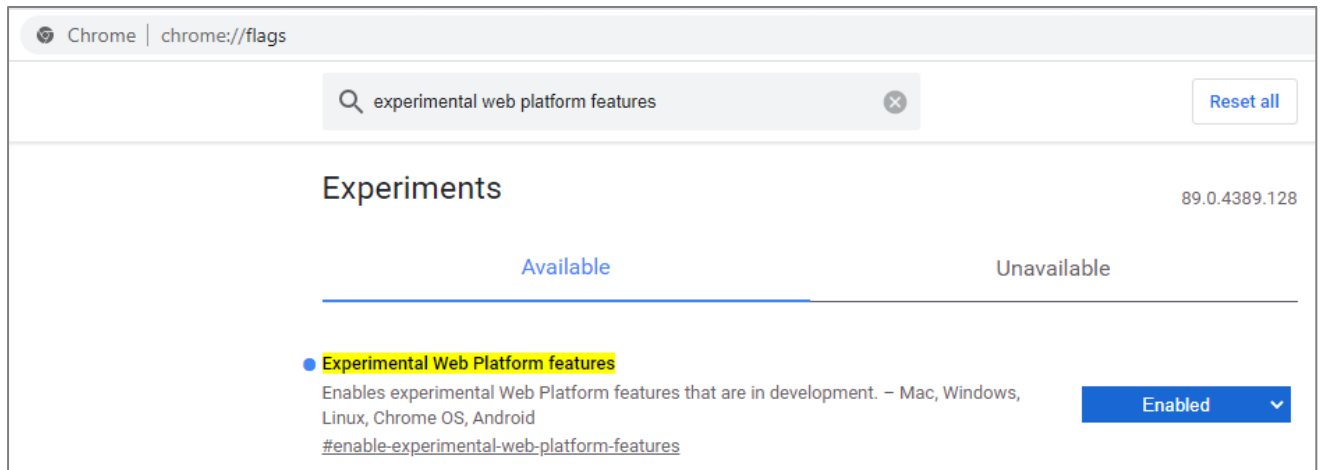
"Please use chrome://flags to enable-experimental-web-platform-features".



You can enable it at the browser level to view and play multiple audio tracks.

- Go to: Chrome://flags/
- Search for Experimental Web Platform features and enable it.

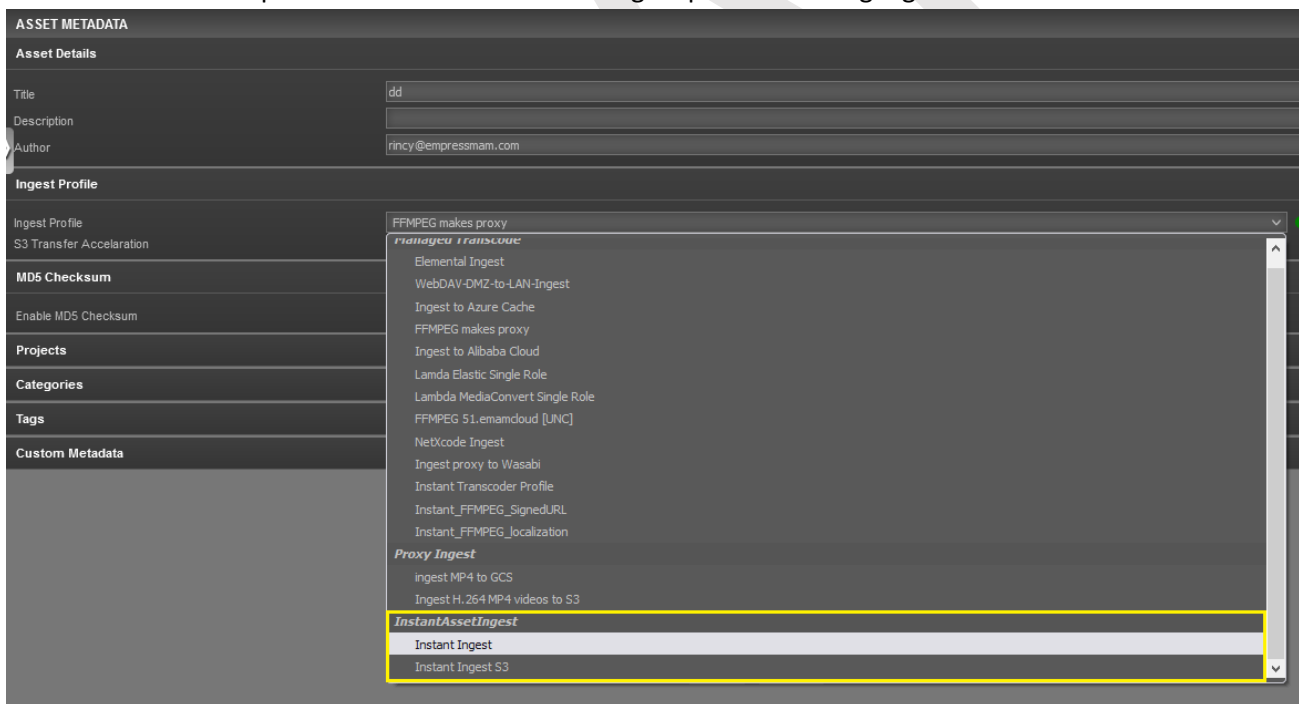
- Relaunch the chrome browser page.



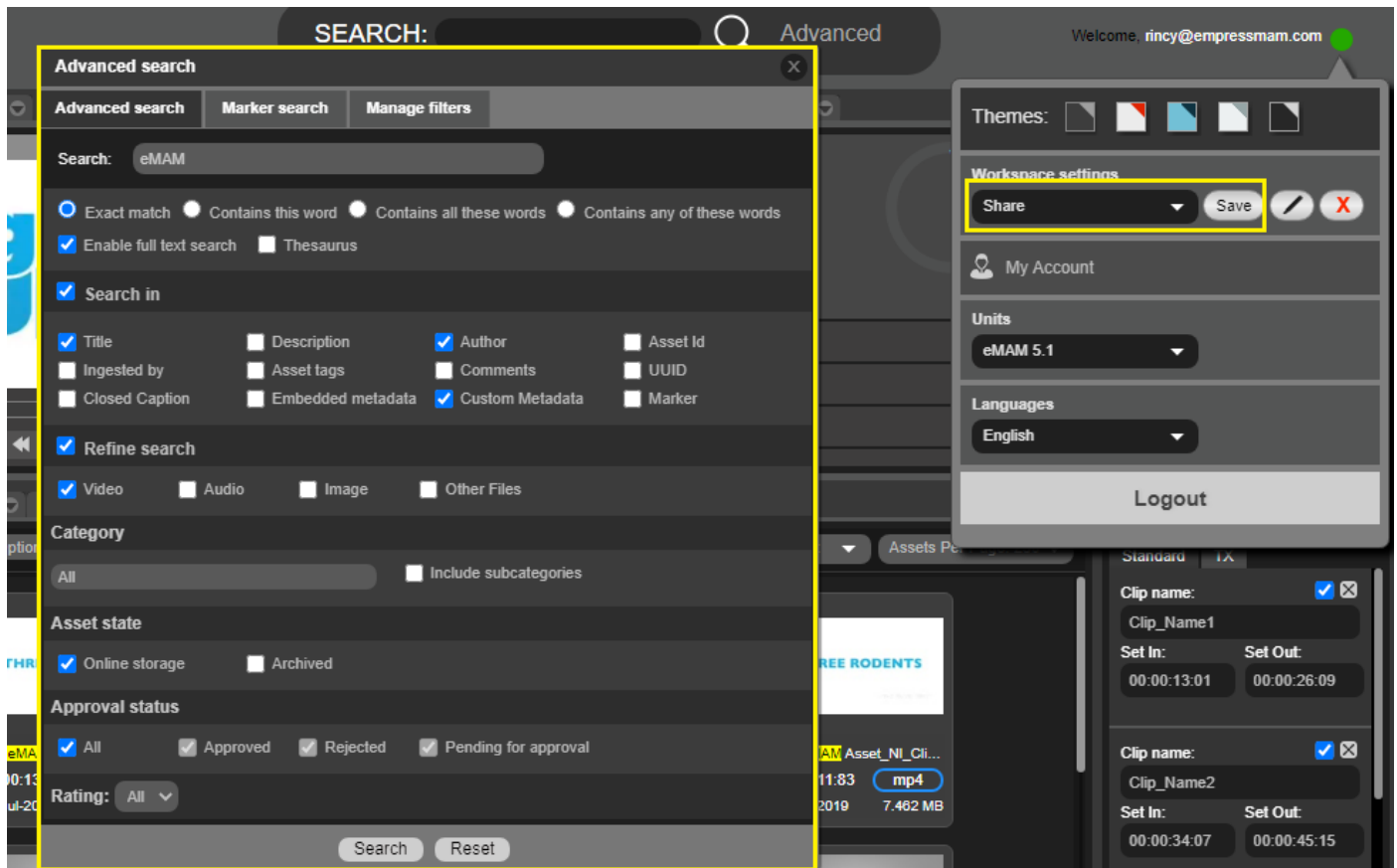
The same settings apply for other browsers too:

- Microsoft Edge: edge://flags/
- Opera: opera://flags/

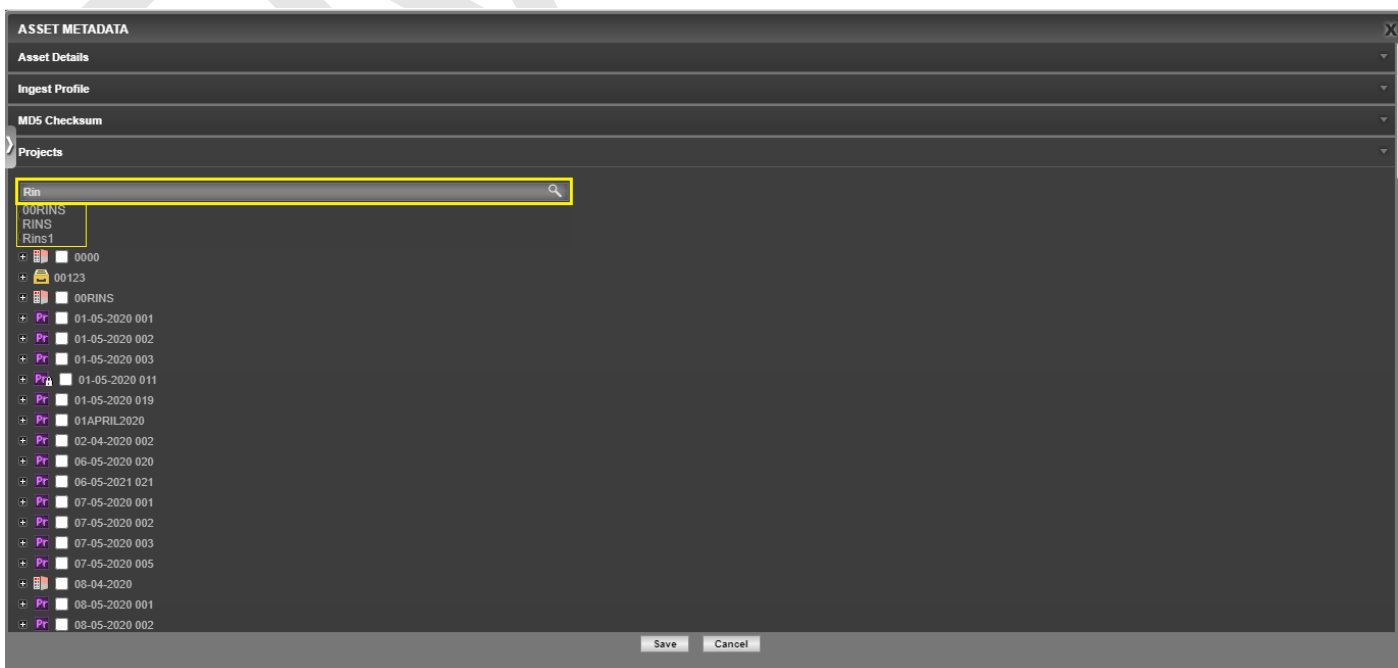
11. **Support “Instant asset” workflow:** Assets ingest via eMAM Director will have option to get ingested as instant asset as users have option to select “Instant asset ingest profiles” during ingest.



12. **Save *Advanced Search* parameters with workspace settings:** Advanced search is now part of the workspace settings. Open the *Advanced Search* popup and make the necessary changes to the search parameters and save the workspace. Next time when you load *Advanced Search* window, the saved advanced search settings will be displayed.



13. **Option to search projects** in the *Asset Metadata* popup for uploads using *Ingest widget>Uploader*.

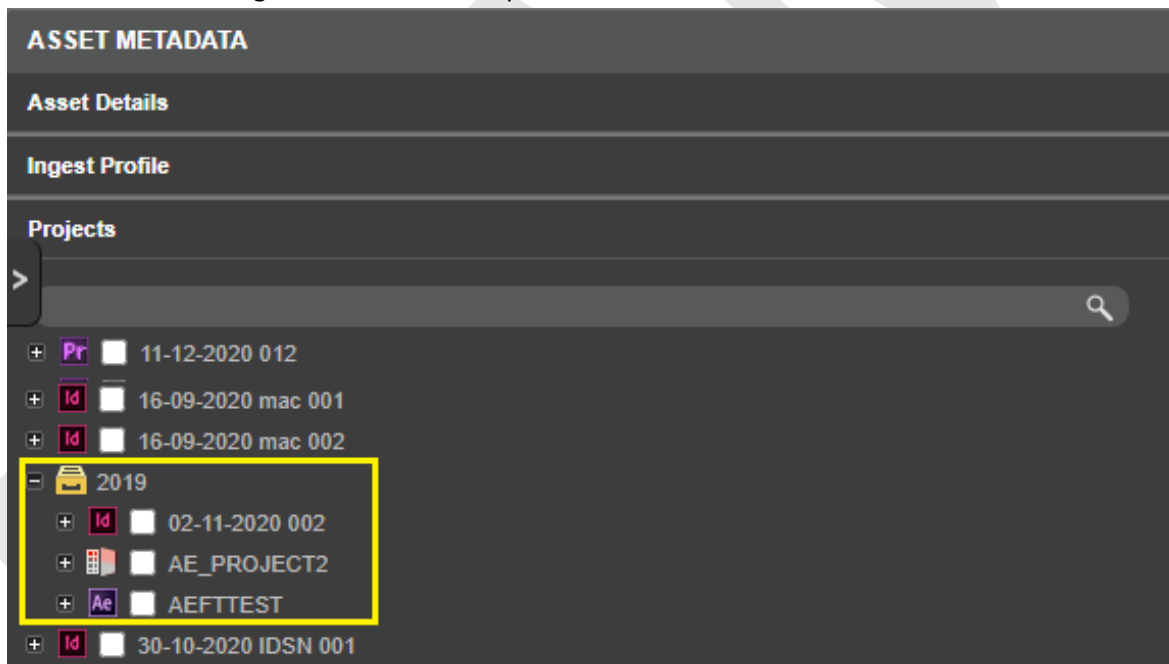


14. On Ingest assign assets to different projects under the Collections.

- i. In the *Asset Metadata* window for upload using *Ingest widget>Uploader*.



- ii. In the *File Versions* widget for new version upload.



15. Option to add “Author” for Project assets

Now when you create project assets, the moment you select the storage profile, an additional author field (editable) is displayed.

Add new project

Info Users Categories Schedule 1 project

Project name: ABC

Project description: Marketing

Public tags: eMAM

Metadata Set: Project Set

Storage Profile: GCP_Folders

Author: rincy@empressmam.com

Project Status: None

Add

16. 'Thesaurus' unchecked by default in the *Advanced Search* window.

Advanced search

Advanced search Marker search Manage filters

Search:

☒ Exact match ☐ Contains this word ☐ Contains all these words ☐ Contains any of these words

☒ Enable full text search ☐ **Thesaurus**

☒ Search in

☒ Title ☒ Description ☒ Author ☐ Asset Id

☐ Ingested by ☐ Asset tags ☐ Comments ☐ UUID

☐ Closed Caption ☐ Embedded metadata ☒ Custom Metadata ☐ Marker

☒ Refine search

☒ Video ☒ Audio ☒ Image ☒ Other Files

Category

All ☒ Include subcategories

Asset state

☒ Online storage ☒ Archived

Approval status

☒ All ☒ Approved ☒ Rejected ☒ Pending for approval

Rating: All

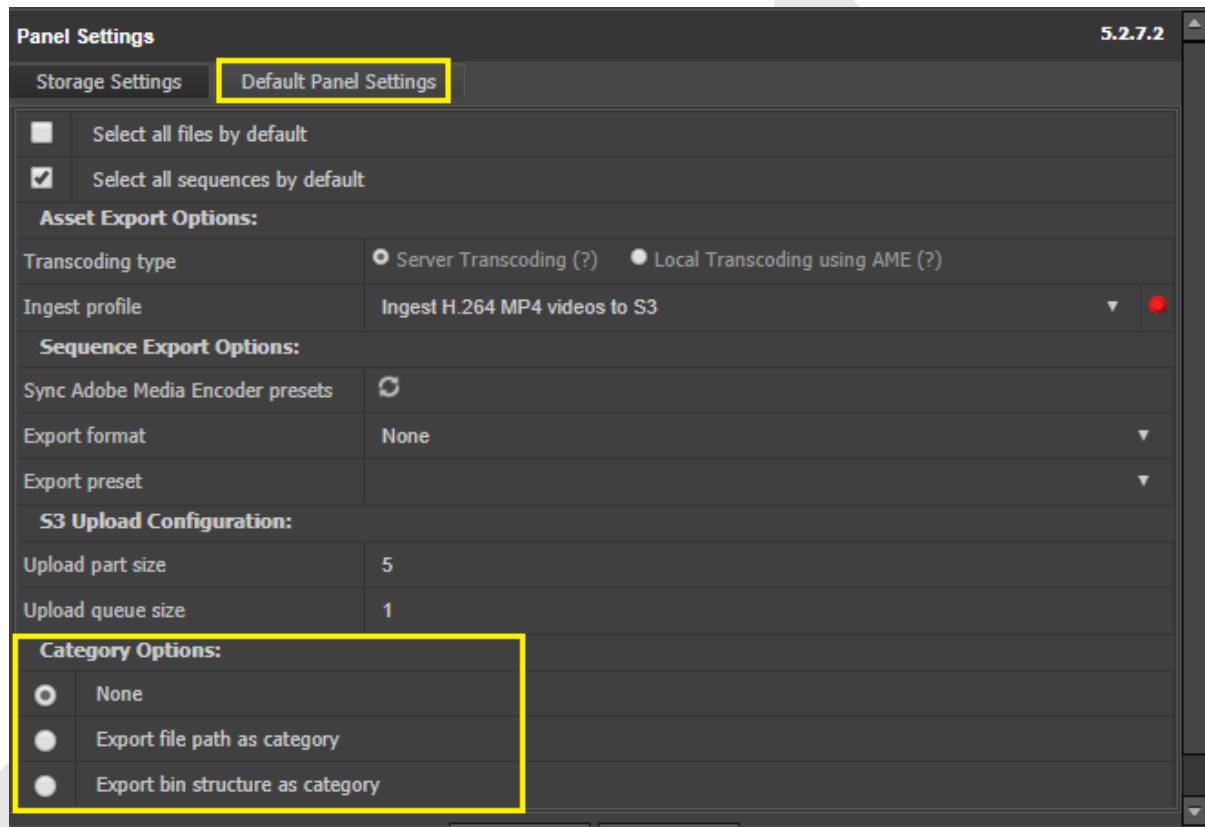
Search Reset

17. Clear icon option for *Basic search*.

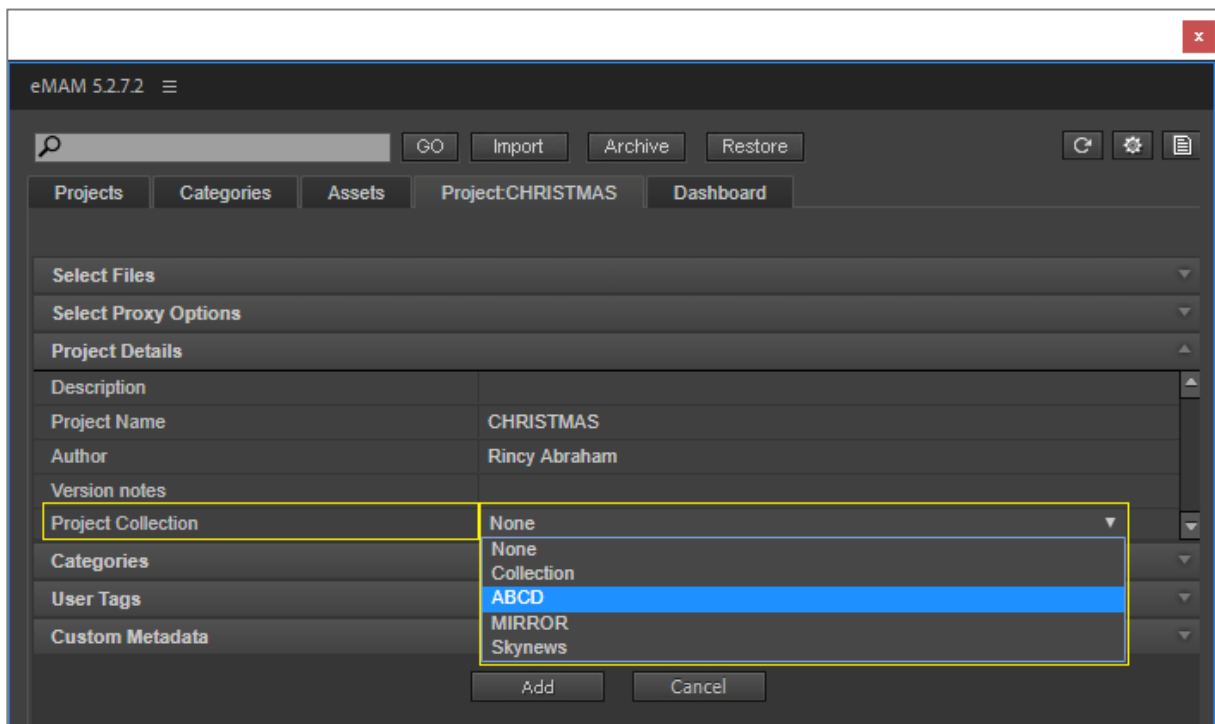
SEARCH: Sunflower Advanced

eMAM Premiere Panel

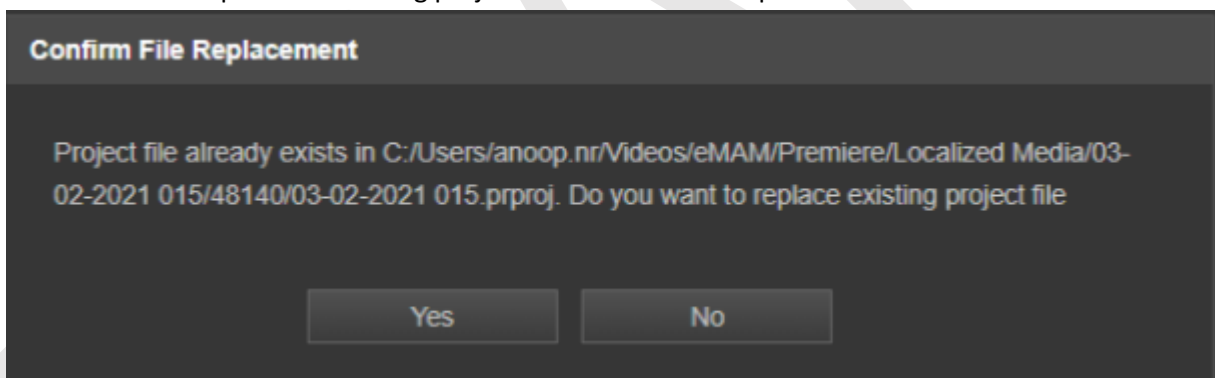
1. **Provision to add bin structure as categories in eMAM** under the selected category on Premiere export.
 - i. **Export file path as category** (*radial button*): Enable this button to keep source folder structure same as category. You can set the Category name as the export path name. When assets are exported from premiere, the file path will be converted to category and it can be seen in the eMAM Director.
 - ii. **Export bin structure as category** (*radial button*): Enabling this button will add bin structure as categories in the eMAM system under the selected category, on export from Premiere.



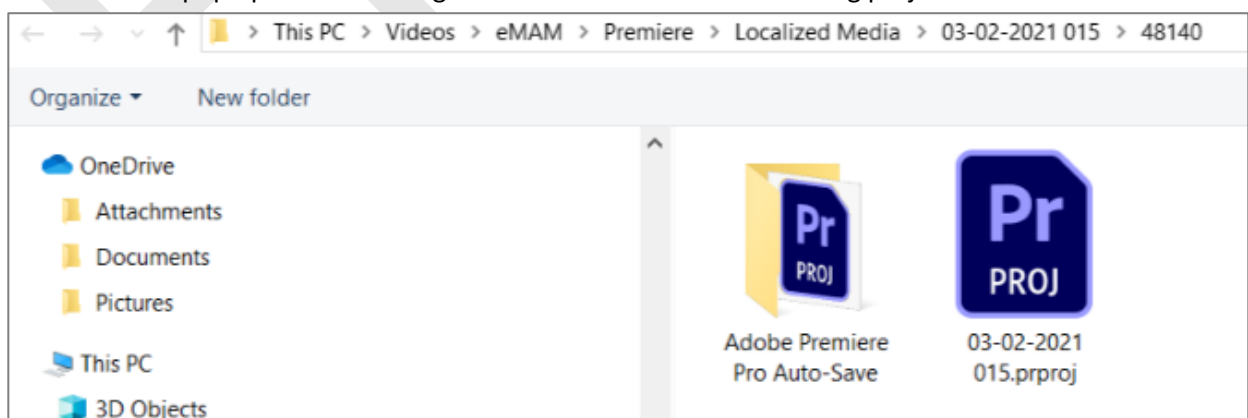
2. **Option to select project Collections during export from Premiere:** When a project is exported for the first time from Premiere to eMAM, you will have option to assign it to any collection under the *Project Details* section. But on the version exports, collection dropdown will not be displayed in the *Project details* section.



A new pop-up message is displayed asking to overwrite existing project or not on the same version import. Click on “Yes” will replace the existing project file with the one imported from eMAM.

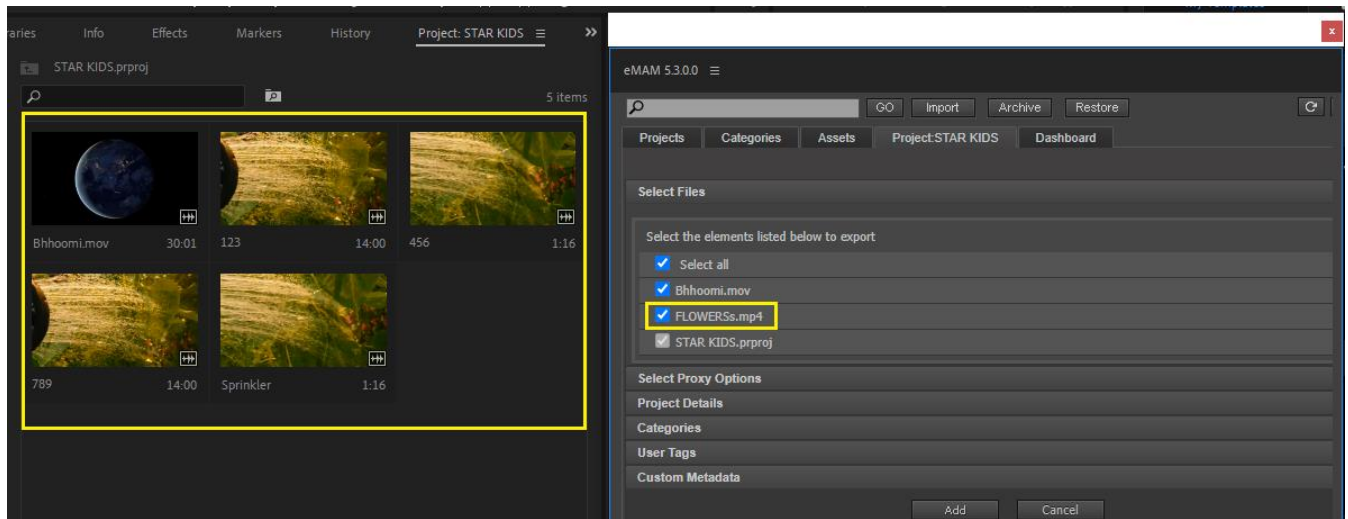


Click on “No” will pop up another dialog box to move or delete the existing project file.

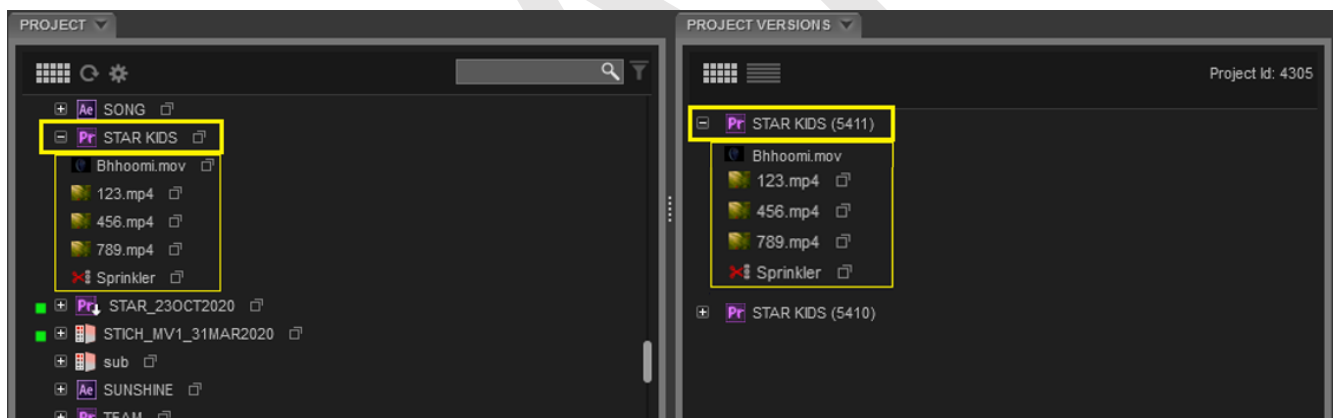


3. Export multiple elements pointing to same media

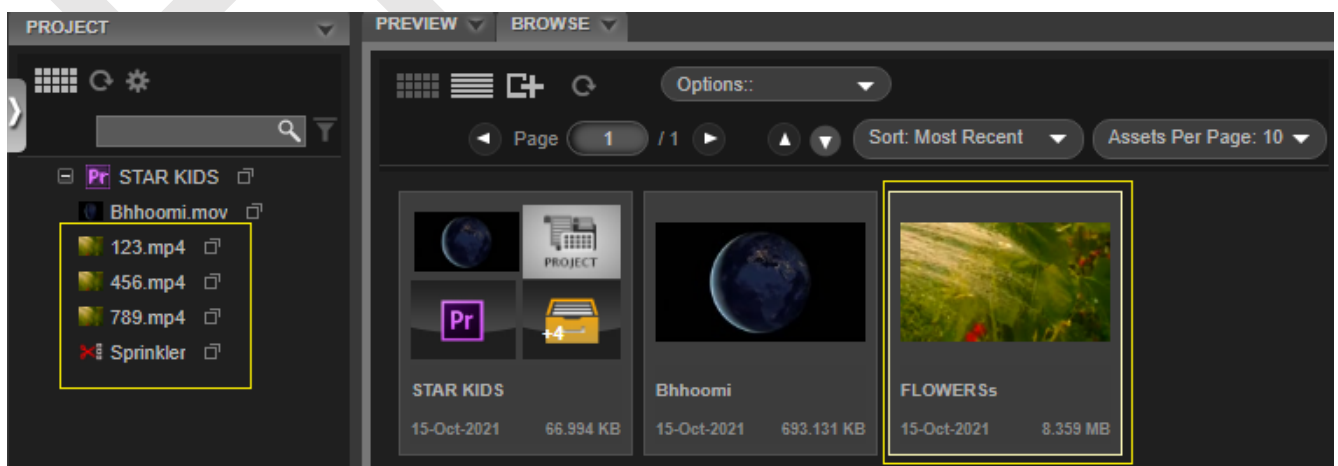
Unlike before where multiple project elements were treated as different assets in eMAM, eMAM Panel now exports only the original file name (which is linked to these elements) back to eMAM.



All the elements exported back to eMAM will be displayed under the Project & Project Versions widget.

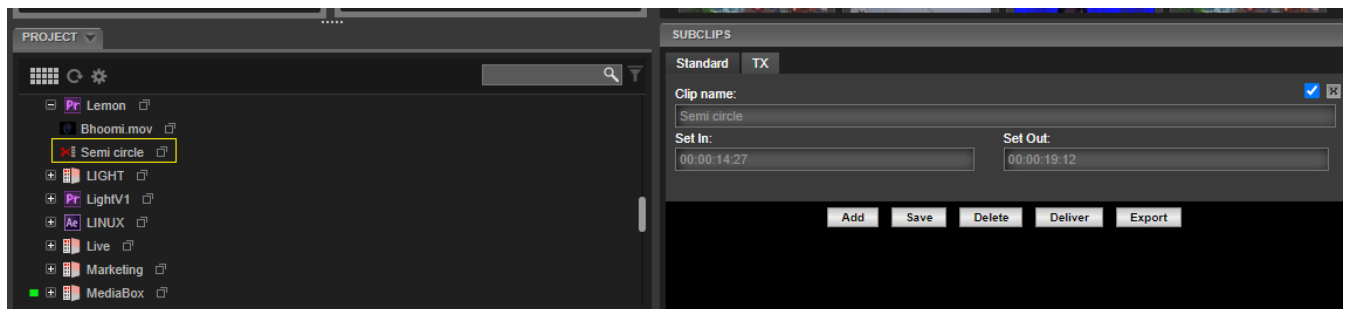


Click on any of the elements in the Project widget and it will point to the original asset.



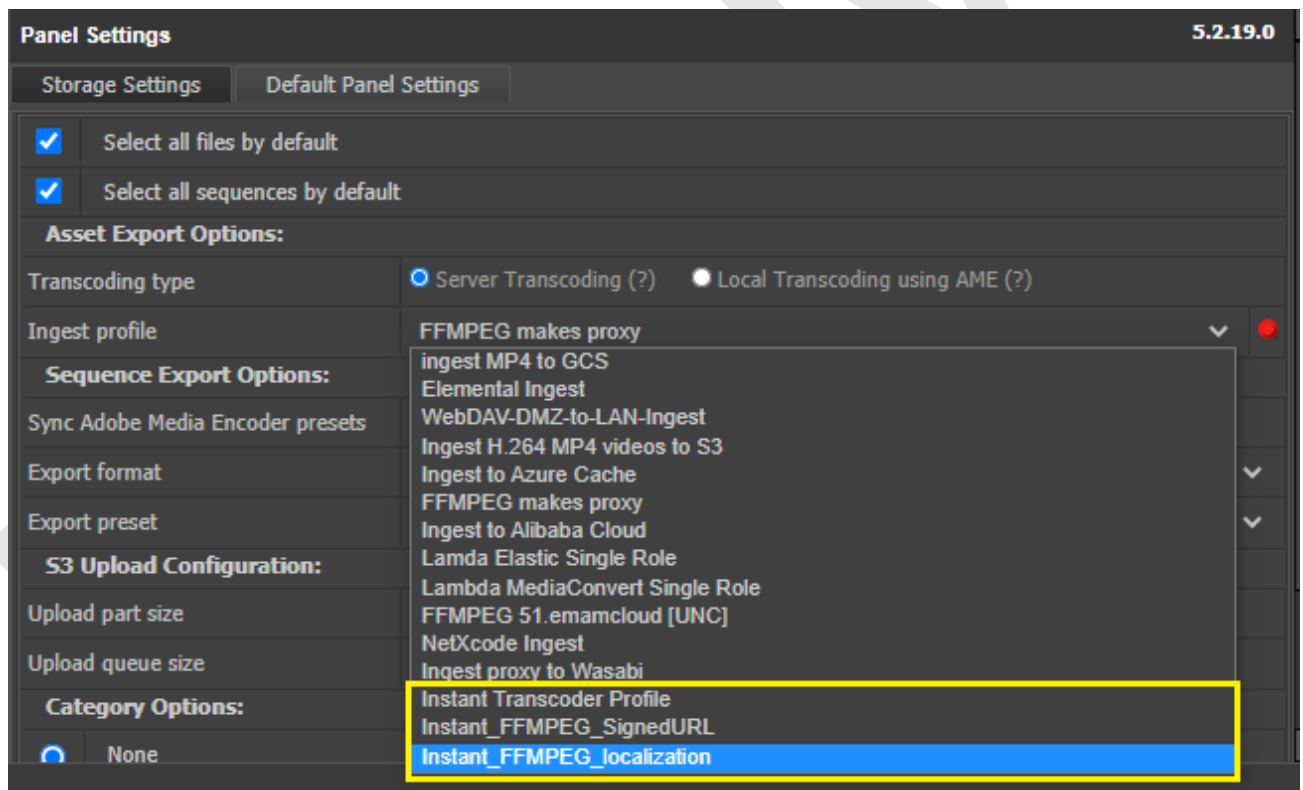
4. Export subclips created in Premiere

Subclips created in Premiere can be exported back to eMAM and it will be displayed as a separate element under Project widget along with subclips details under Subclip widget.



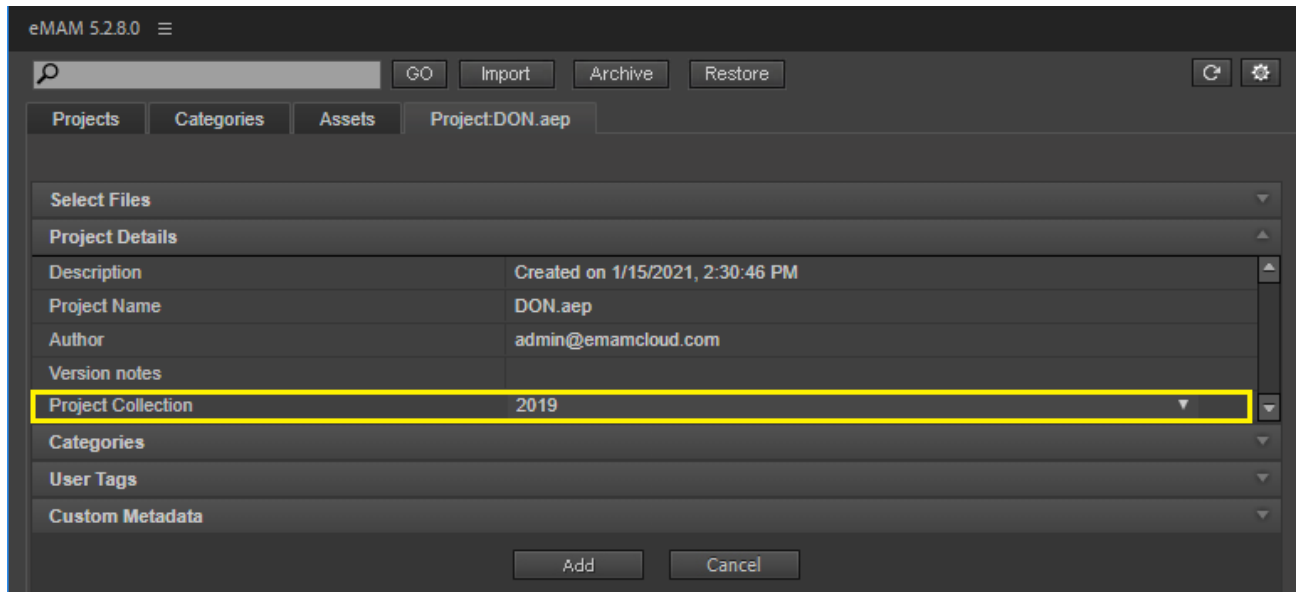
5. Support for “Instant asset” ingest profiles

Assets exported back to eMAM from Premiere panel can now be uploaded to eMAM using *instant asset ingest profiles*.



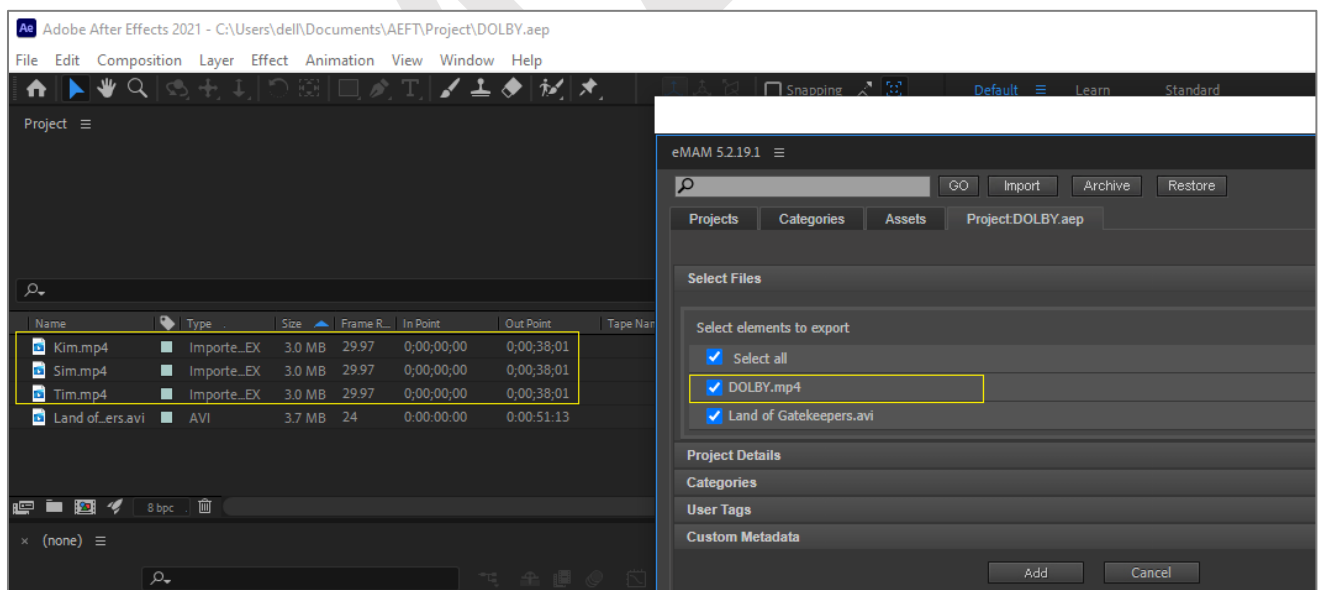
eMAM After Effects Panel

1. **Added option to choose project Collections on the export** window in the AE panel.

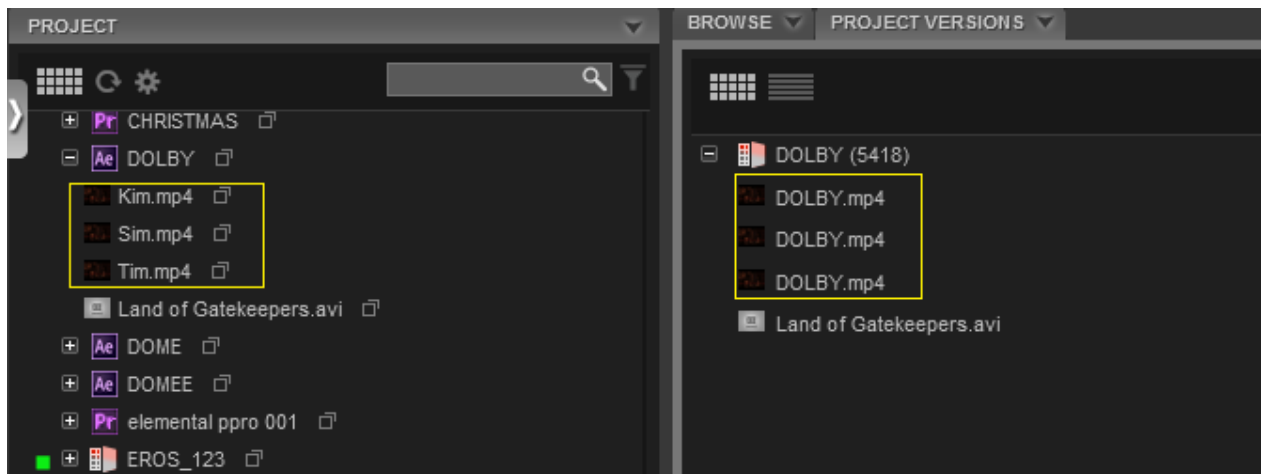


2. **Export multiple elements pointing to same media**

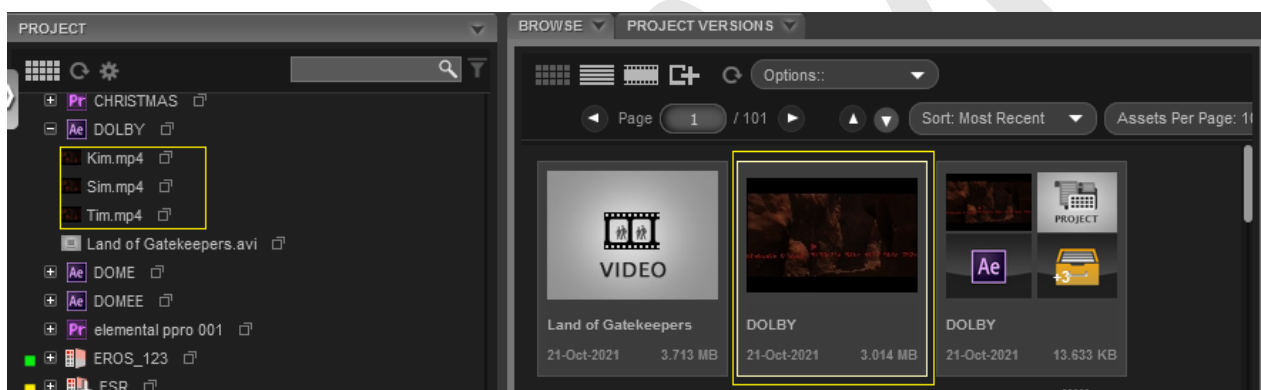
Similar to Premiere, After Effects Panel also now exports only the original file name (which is linked to these elements) back to eMAM.



All the elements exported back to eMAM will be displayed under the Project & Project Versions widget.

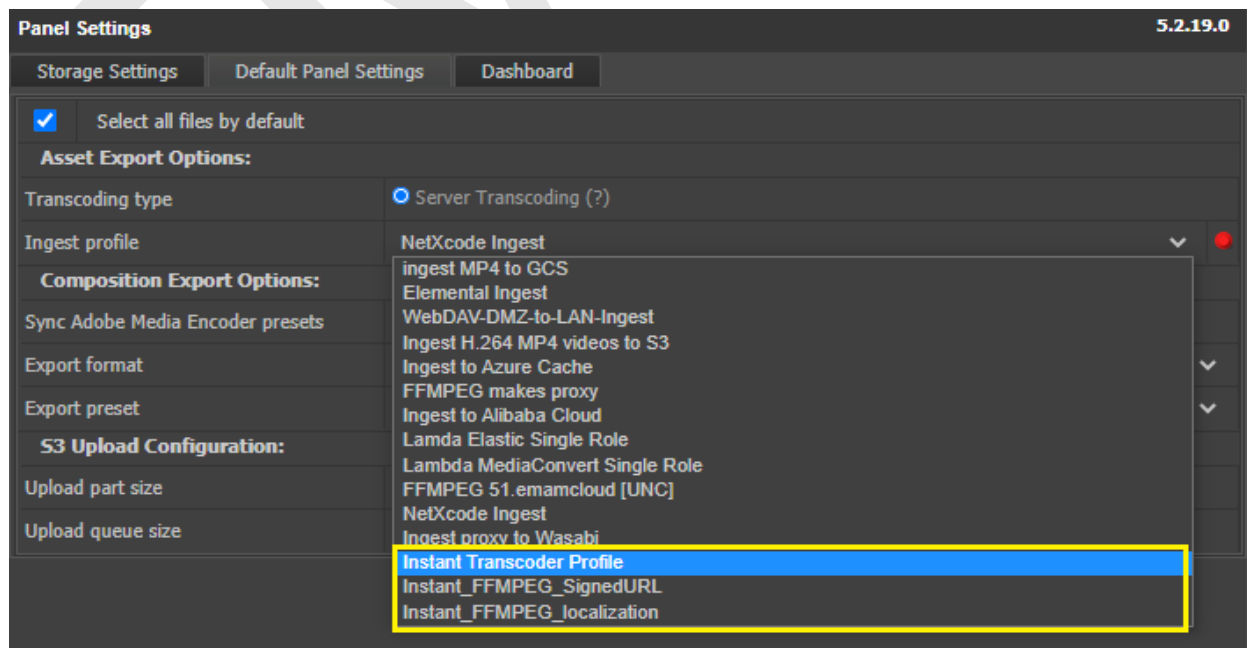


Click on any of the elements in the Project widget will point to the original asset.



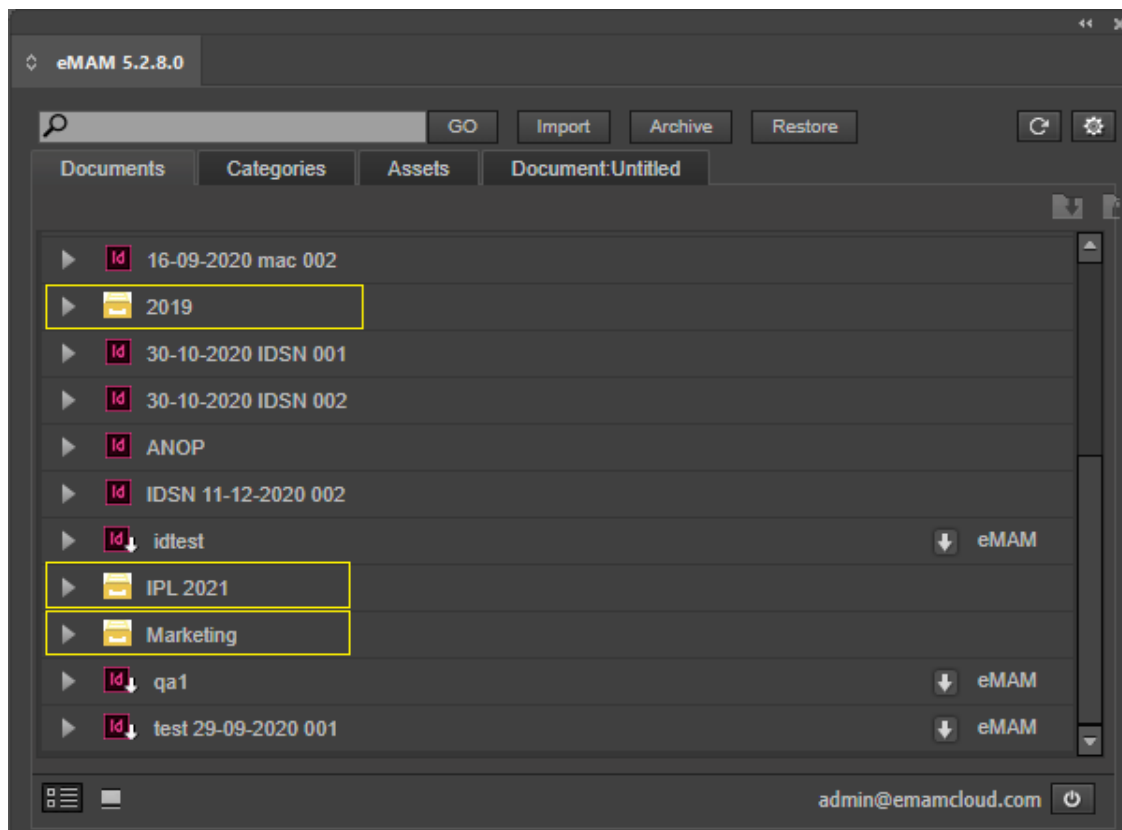
3. Support for “Instant asset” ingest profiles

Assets exported back to eMAM from After Effects panel can now be uploaded to eMAM using *instant asset ingest profiles*.

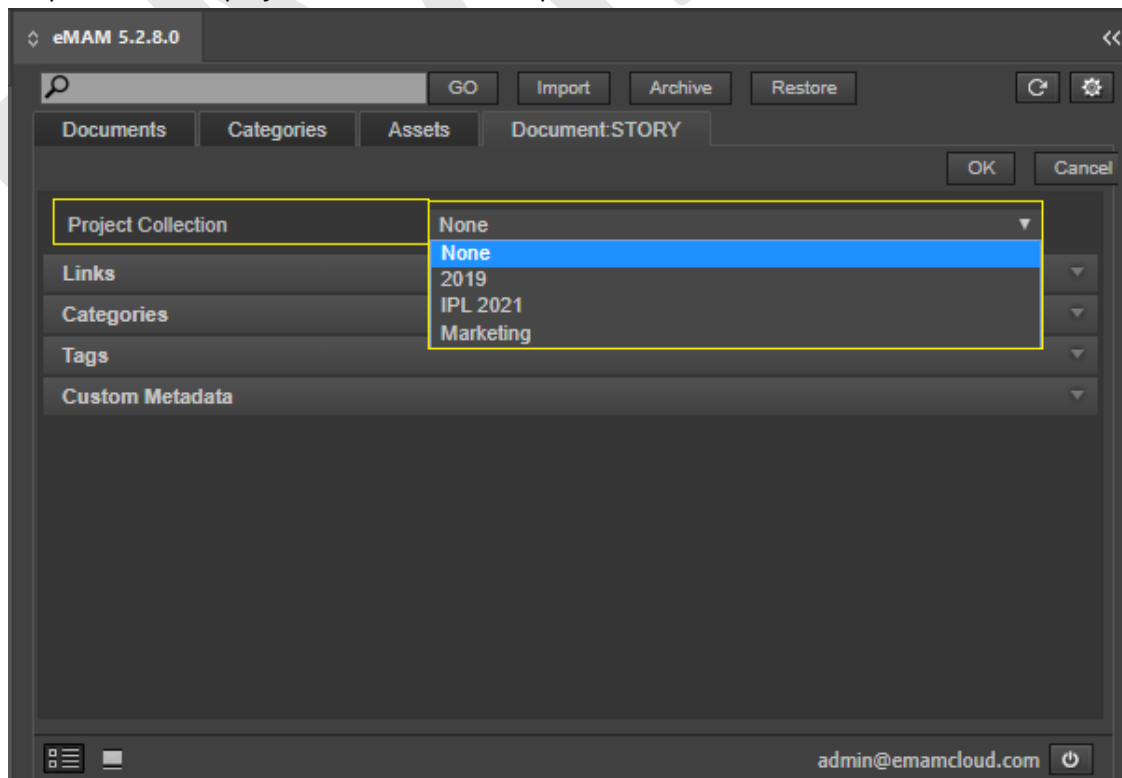


eMAM InDesign panel

1. **Access Collections:** Now see Collections in the *InDesign* panel
 - a. Under the *Documents* tab.



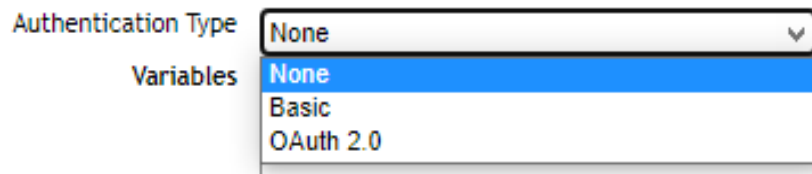
- b. Option to select *project collection* in the export window



eMAM Super Admin interface

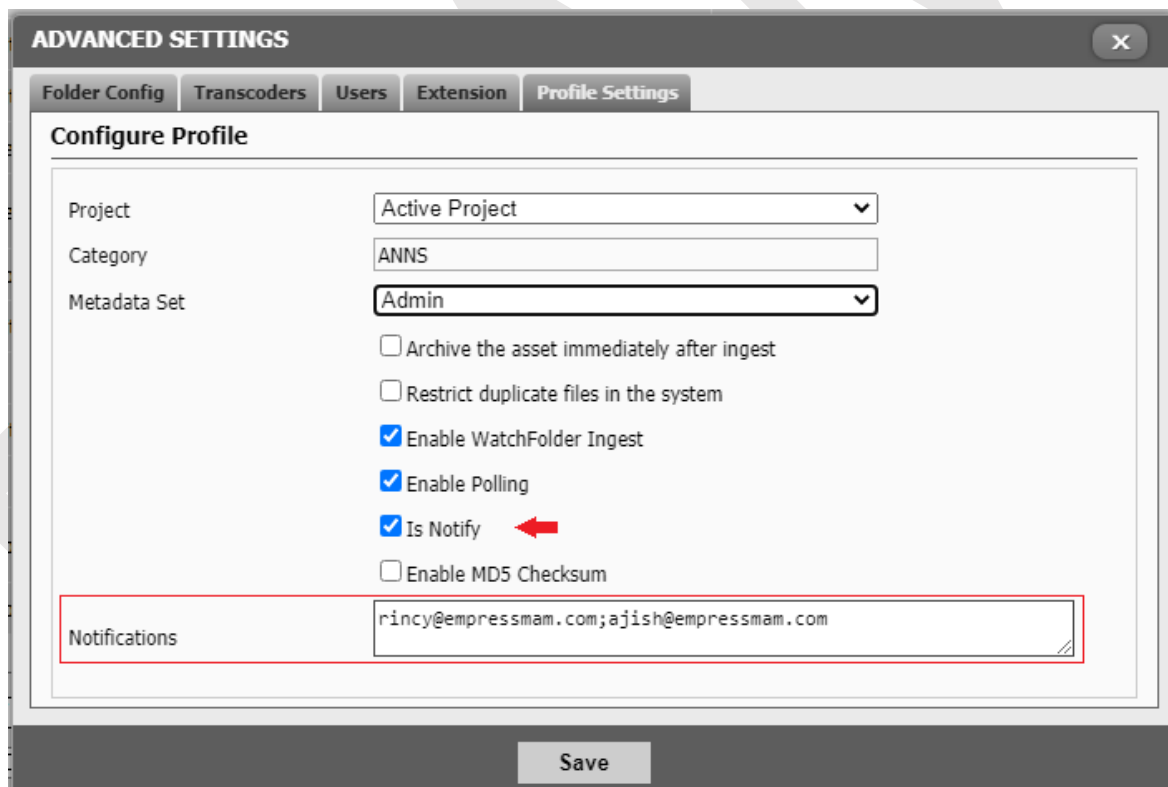
1. "OAuth" Authentication type in workflow management.

Introduced "OAuth" as the new authentication type in the workflows. OAuth 2 is an authorization framework that enables applications to obtain limited access to user accounts on an HTTP service. Enter grant type, access token URL, client id, client secret, username & password to get a token.



2. Ingest notification to the user who ingested the content.

If *Is Notify* option is enabled, the user who ingests the file, gets a notification email (*by default*) on ingest completion. Also, if additional email ids are entered in the Notification field, an email notification is sent to those email id's too



3. **Added option for archive/restore notifications:** In the *Archive profile* settings, added an option to enable archive/restore notifications to the user. Notifications will be sent to users on manual archive/restore and on auto archive or on workflow automated archive/restore.

Profile Name:

Archive Host Server:

Archive Type:

Online Folder:

Server:

☐ Delete Files From Storage
 ☐ Delete Files From Source
 ☐ Full Restore
 ☐ Is Default
 ☒ Enable Notifications

Please enter the email ids here to receive notifications. Use semi colon as delimiter for separating mutiple

Vault Name:

Retrieval Type: ☒ Expedited ☐ Standard

CONNECT

4. **Introduced AWS Elemental MediaConvert for Lambda delivery.** AWS Elemental MediaConvert Lambda transcoder now supports the cloud delivery.

Transcode Profile Name *:

Transcode Server IP / Host Name *:

Transcode Server *:

Transcoder Type *:

Role *:

Preset Id *:

5. **Introduced a “Restore Archived assets” checkbox option in workflow Delivery action.** If enabled, archived assets will be restored before delivery.

Actions

Action Type:

Delivery

Delivery Profile:

Priority:

Restore Archived Assets ☒

6. **Introduced “Save as” option to duplicate Delivery profiles**

When you edit any delivery profiles, now you have a new “Save As” button to save the same configurations as a new delivery profile. A popup will be displayed on clicking “Save As” button. You can enter a name for the new delivery profile and click on *Submit* button to save it. This will create a duplicate delivery profile with same configurations.

7. Introduced “DAC ALTO Connect” as new archive type

eMAM now supports “DAC ALTO Connect” as a new Archive type.

8. Added “Ingest Description” as a variable in the workflow conditions.

With *Ingest description* added as a variable in the workflow condition, you can now create different workflows for ingest events using *ingest description* variable. For example, you can create a workflow with ingest status = “Error” and give another condition like ingest description = “Error code 10002.”

Field	Operator	Value	And/Or
Ingest Status	Equals	Error	And
Ingest Description	Equals	Error code 10002	Select

Actions

Action Type: Select Add

9. Introduced option to edit the Super Admin Account email address

Unlike before, now there is an option to edit the default *Super Admin* account and change it to another account by changing the email address.

EDIT/DELETE USER - SEARCH BY EMAIL ADDRESS : <input type="text"/>						
9	Binu Paul	binup@empressinfotech.com	UNIT ADMIN	ADMC		
1037	Binu Paul	binup@empressinfotech.com	UNIT ADMIN	Dev Test Unit		
1	admin3 admin1	empressadmin@empressdigital.com	SUPER ADMIN	EMAM		
3	Anoop NR	nranoop@empressmam.com	UNIT ADMIN	EMAM STAGING 5.2		
15	one plus	one@empressmam.com	UNIT ADMIN	EMAM STAGING 5.2		

You can also create a new Super admin account with EMAM as the default unit.

Server Management Unit Management User Management Storage Configuration Ingest Profiles Delivery Profiles Archive AI Dashboard Site Analytics Workflow

CREATE NEW USER

Email * Unit*

PERSONAL INFORMATION

Firstname* Lastname* Domain Username*
 Mobile Phone* Address1*
 Fax City* Address2
 Address3 State* Country*
 Zipcode **Role*** Title
 Auto generate password ☒ Password Confirm password

10. Introduced *Instant Asset* as new Xcode type.

In addition to other Xcode types, now “Instant Asset” has been added a new Xcode type to support instant asset workflows. Now for instant assets, separate ingest profiles can be created with Xcode type as “Instant Asset”.

Profile Name :

Xcode Type :

eMAM Ingest Manager :

Storage Folder :

Transcode Server :

ManagedTranscode
 ProxyIngest
 OriginalWithProxy
 NoProxy
 SidecarXMLIngest
InstantAssetIngest

11. Included Today() option in the filter search and workflow conditions.

Today

Jan 2021

Su	Mo	Tu	We	Th	Fr	Sa
					1	2
3	4	5	6	7	8	9
10	11	12	13	14	15	16
17	18	19	20	21	22	23
24	25	26	27	28	29	30
31						

Today

12. Added “Create Proxy” as a new Action type in Workflows

In the *custom workflow* window, “Create Proxy” has been added as a new *Action type*. So now you can create different workflows to generate proxies for assets, e.g., for assets which got ingested using “instant asset” ingest profiles and do not have proxies or for assets which failed transcoding with one transcoder, you have option to re transcode the assets with another transcoder or to create proxies for original assets . You have option to choose different storage & ingest profiles for proxy creation.

Actions

Action Type: Create Proxy Add

Create Proxy

Storage Profile: Instant Asset Storage (No-Cloud)

Ingest Profile: Instant Transcoder Profile

Below is a custom workflow created to re transcode all the assets which failed transcoding using “ingest proxy to Wasabi” with error description “*Transcoding Failed. process crashed*”. Similarly, you can create different custom workflows to create proxies for assets using different event types and conditions.

Workflow - Retranscod

Workflow Name: Re-transcode

Description:

Event Type: Ingest

Conditions

Field	Operator	Value	And/Or
Ingest Status	Equals	Error	And
Ingest Profile	Equals	Ingest proxy to Wasabi	And
Ingest Description	Equals	Transcoding Failed. process crashed	Select

Actions

Action Type: Select Add

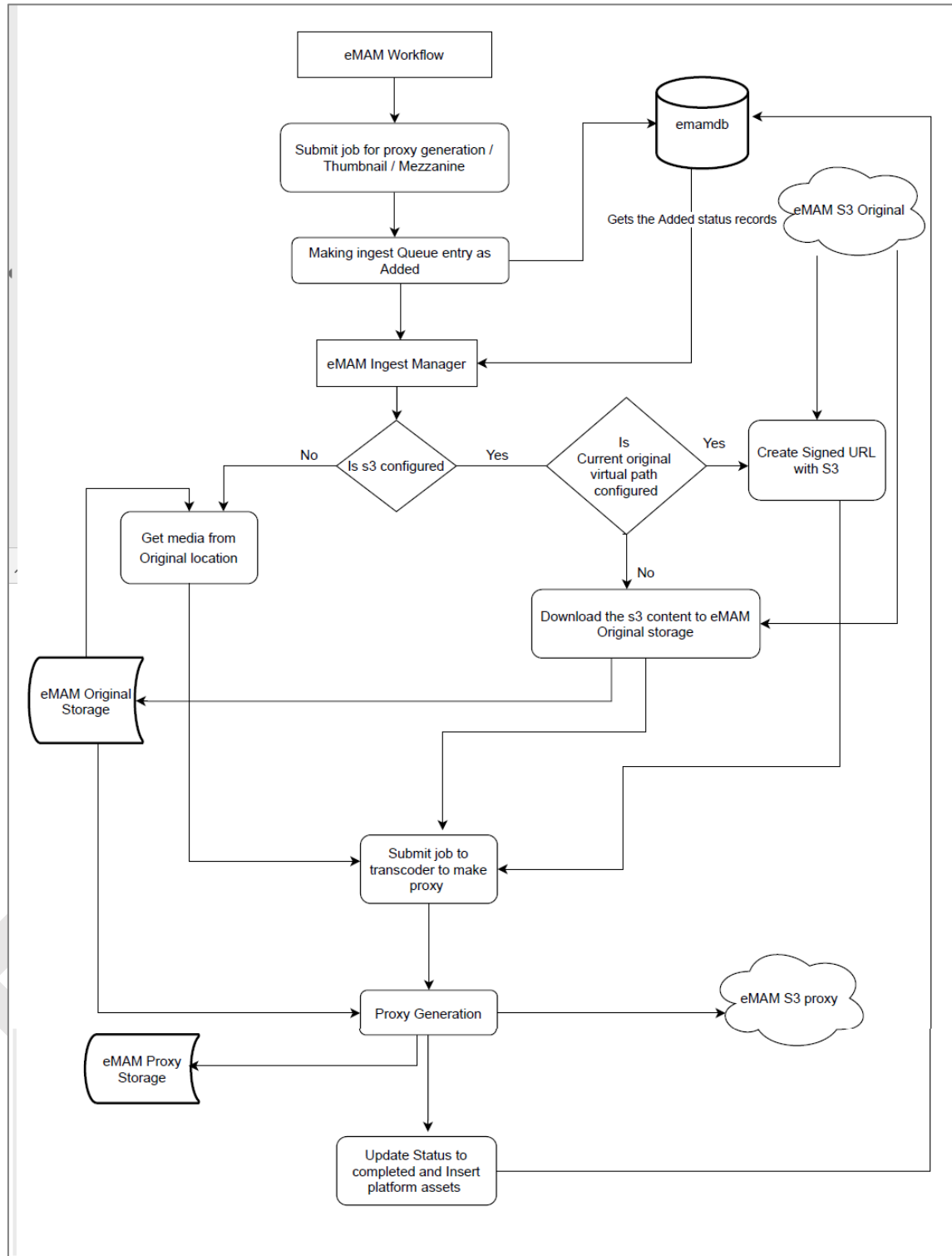
Create Proxy

Storage Profile: New York NAS

Ingest Profile: FFMPEG makes proxy

Save Reset

Below is a high-level diagram on the create proxy workflow.



Feeder (Java) & eFeeder

1. **Support “Instant asset” workflows:** Both Feeder (Java) and eFeeder supports ingest of instant assets using “Instant asset” ingest profile.

Metadata

Description:

Projects:

- 000000001newproject
- 000000001yestv-ame-test
- 000000001projectnew
- 0000001JUNE16TESTPRC
- 01-10-2020 IDSN MAC 00
- 04-02-2021 001
- 08 oct 001
- 08 oct 002
- 08 oct 003
- 08-06-2021 AEFT 001
- 08-06-2021 AEFT 002

Categories:

- 0000000001_category_r
- 000000001Hbo_mezz_de
- 00000001_mez_delete_te
- 00abc_pm
- 1
- 101
- 12-03-2014
- 13
- 2
- 2017
- 2017 (1)

Tags:

- alen
- desktop
- new
- newtag
- private
- private77
- screenshot
- tag1
- tag2
- temporary
- test
- test1
- test777
- testarmenia

Custom Metadata:

Metadata Set: Set 1

Group 1 News QC

multi -1

Select Items...

Name

test int

unique

Select Items...

Integertype

Transcoding: Use the server

Ingest Profile: Original with Proxy

Author: admin@empressmam.com

Priority: 1

OK Clear Cancel

eFeeder

Settings

ASSET METADATA

Asset Details

Ingest Profile

Ingest Profile: Instant Asset Test Profile

MD5 Checksum

Projects

Categories

Tags

Custom Metadata

Managed Transcode

- AME_Service(10.0.8.14)
- AME_INGEST(10.0.8.20-cloudstorage)
- AME_Ingest (10.0.8.20)
- AME_Ingest (10.0.8.61)
- AME_Service(10.0.8.71)
- NetXcode_106
- Netxcode_232
- LMU Ingest
- ffmpegcloud
- FFMPEG_640x360
- Ingest_withFTP
- NetXProxy-Commandline
- Vanatage_Profile
- Proxy Ingest
- ProxyOnly
- InstantAssetIngest
- Instant Asset Test Profile

Other Changes

1. Changes in InDesign panel to upload to S3 using S3 Node.js API without SigCLI.
2. Changes in eMAM Director to pass MD5 checksum for S3 Ingest.
3. Changes in Premiere Panel for s3 transfer acceleration.
4. Exmancmd command line tool part of App Manager.
5. Develop a webpage to create the new unit based on the info inside JSON.
6. Option to validate segment files for category delivery with ATEME.
7. Changes in Director Dashboard to show stitch and deliver status for ATEME delivery.
8. Changes in Photoshop Panel to make the import as new layer and new file identical.
9. Display eShare title in eShare preview page (webpage title).
10. Changes in AE panel to create Bin structure if we import the category even though there are no files inside the category.
11. Changes in S3 connector to upload the asset from source for "process from source" uploads.
12. Changes in Ingest manager to download asset from s3 to storage and submit the job to transcoder.
13. Implement face training option for Amazon Rekognition.
14. Changes in electron eFeeder to edit the title of files.
15. Provide the option to clear the metadata in electron eFeeder.
16. Changes in electron eFeeder to save all the settings into config.json
17. Changes in electron eFeeder to add more files into the upload queue even if other uploads in progress
18. Changes in Lambda to resubmit the asset without preview
19. Changes in Lambda to use Elemental MediaConvert for audio transcoding
20. Implement Net-X-Code export in After Effects panel.
21. Implement Transfer acceleration in After Effects panel.
22. Show transfer acceleration status in the Ingest widget.
23. Storage DNA API change to handle "404 not found" in the response.
24. eMAM Panel for Premiere should take the extension values from ingest profiles settings.
25. Changes in *AddIngestQueueDetails* to return Ingest Queue ID as response ID. Changes in Director to include resubmit the asset without preview parameter in Ingest Job json.
26. Changes in Premiere panel to create Bin structure if we import the category even though there are no files inside the category.
27. Java Feeder to display * for mandatory metadata fields.
28. Changes in Ingest manager to support Mezzanine and thumbnail generation with ATEME Titan File.
29. Change the sequence export from entire to in and out.
30. Unit/user count checking in CFT unit creation.
31. Include *GetAccelerateConfiguration* part of CFT.
32. Use JSON CFT instead of YAML file for unit cloud creation.
33. Changes in Java Feeder to show the file size dynamically based on the size of file (KB, MB, GB).
34. Changes in Photoshop panel to make the import as new layer and new file identical.
35. CFT to deploy the resources, creates and IAM user and edit the existing IAM role to add policies to access new buckets.
36. Changes in create cloud unit page to create local AME and FFMPEG profiles.
37. Changes in Task Manager to implement archive purge from source.
38. Changes in Rest API to receive client_Id as Unit Id.
39. Included Markers PATCH and DELETE end points in REST API.

40. Changes in eMAM Director, eFeeder, Premiere Panel, AE Panel, InDesign Panel and Java Feeder to send the asset type to Lambda based on Super Admin profile extensions.
41. Automatically launch App Manager application for eMAM panels instead of opening up download.htm page wherever there is a need for install latest eMAM panel.
42. Premiere panel, Ingest widget and File Versions widget upload can now upload the assets to S3 and submit the job to server transcoders.
43. CFT now supports cloud delivery.
44. Extract the timecode offset with Elemental MediaConvert.
45. Ingest Manager changes to catch the exception and do the delay and retry based on the exception.
46. A notification is sent to the user who initiates the delivery.
47. Stand-alone cloud configurations for Original & Proxy cloud storage.
48. Send notifications on completion of a delivery using Lambda delivery profiles.
49. Made two versions of panel zips to support CEP11 and CEP10 Adobe updates.
50. Changes in App Manager to detect the current Adobe app version and install the appropriate zip.
51. Failed and waiting workflow will not be cleared from the Workflow dashboard queue.
52. Added session user for delivery and archive workflow actions.
53. Changes in SSO login module to show the custom error message.
54. Signed URL to be used to download assets in S3 buckets.
55. No ACL settings for the S3 original uploads from eMAM Director.
56. Using "Current Original Virtual Path" signed URL's are generated for assets in S3 and so now assets in S3 need not be downloaded for creating proxies.

Get Help

For more information and assistance, please contact eMAM Technical Support at support@emamonline.com