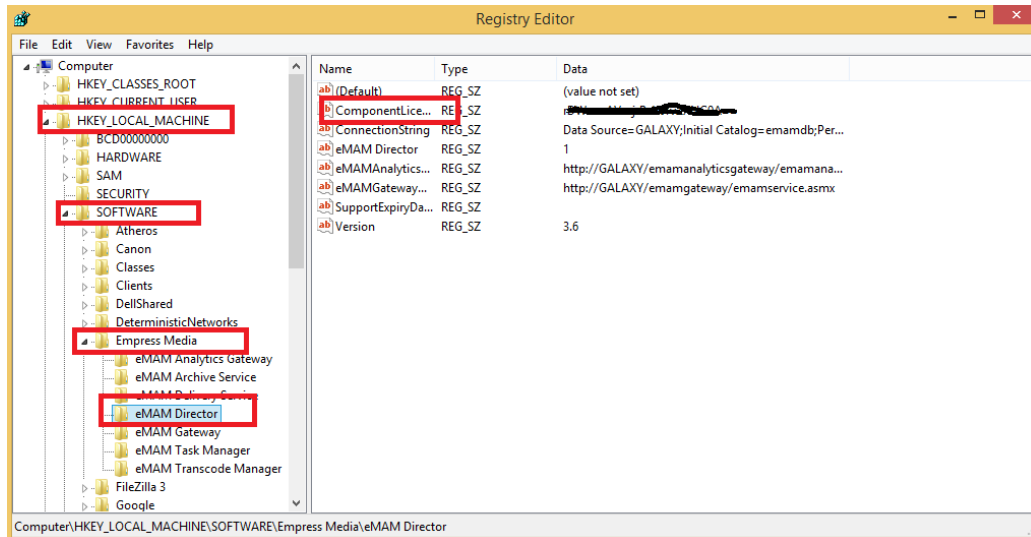


## How to update license in eMAM Feeder.

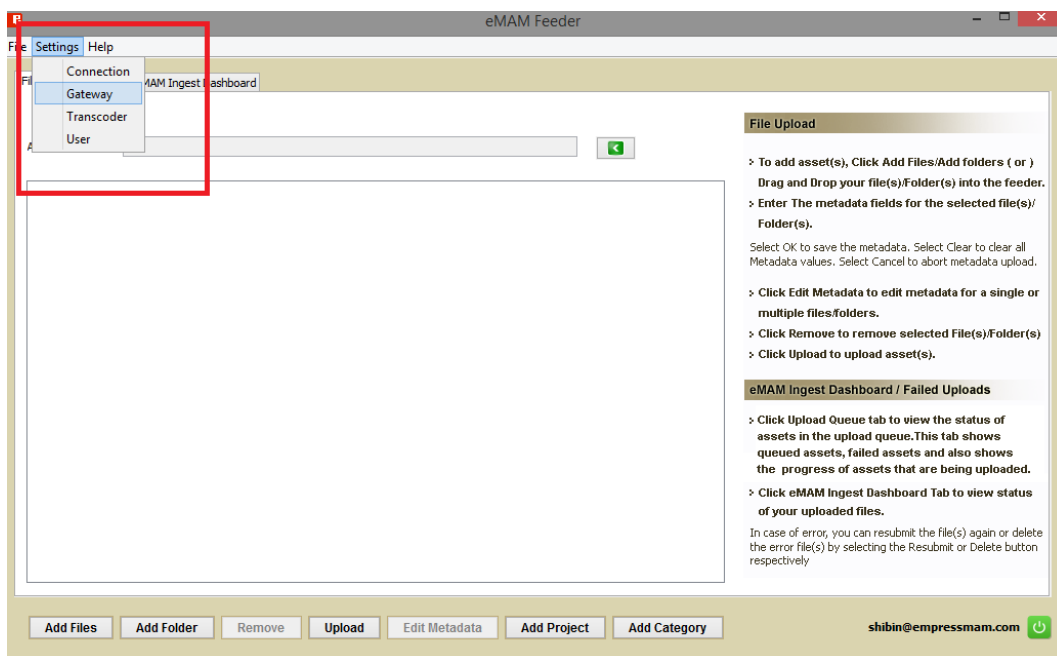
If you had any recent license update in eMAM, then you need to update license in eMAM Feeder also. Here is the steps to perform license update in eMAM Feeder.

Please collect license key of eMAM Director Component from registry.

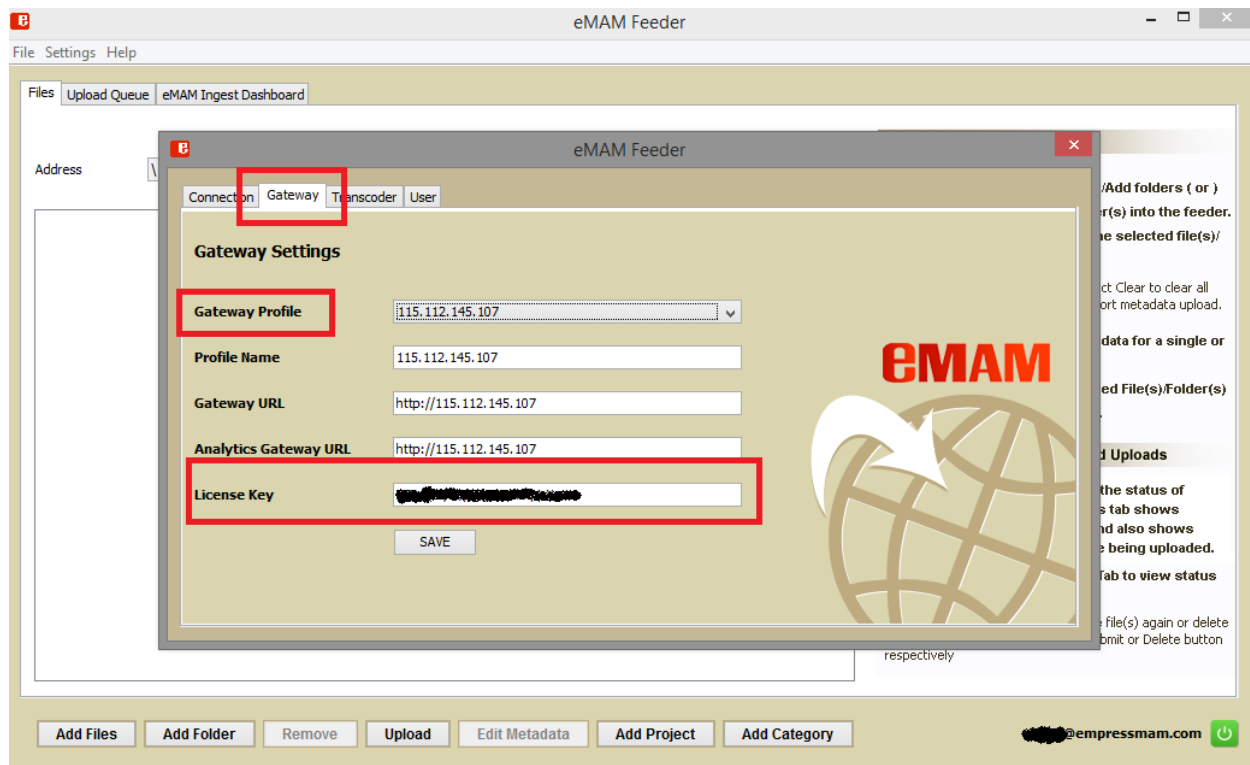


Please don't make any changes in Component license key.

Please open eMAM Feeder and navigate to settings tab which is available at the top left corner.



A drop down window will appear and you may select Gateway. Now you will be able to see eMAM Feeder Gateway settings like the below image.



Please paste the license key which we took from registry in the License Key tab on eMAM Feeder.

Click on save button. Now you have successfully updated new license key in eMAM Feeder. Now you are good to start using your eMAM Feeder again.